

Product Catalog Excerpt



SUGANUMA CO., LTD.

1-5-1, Omorikita, Ota-ku, Tokyo, Japan

TEL +81-3-3762-2771

URL <http://www.suganuma-ss.co.jp>

E-mail contact@suganuma-ss.co.jp

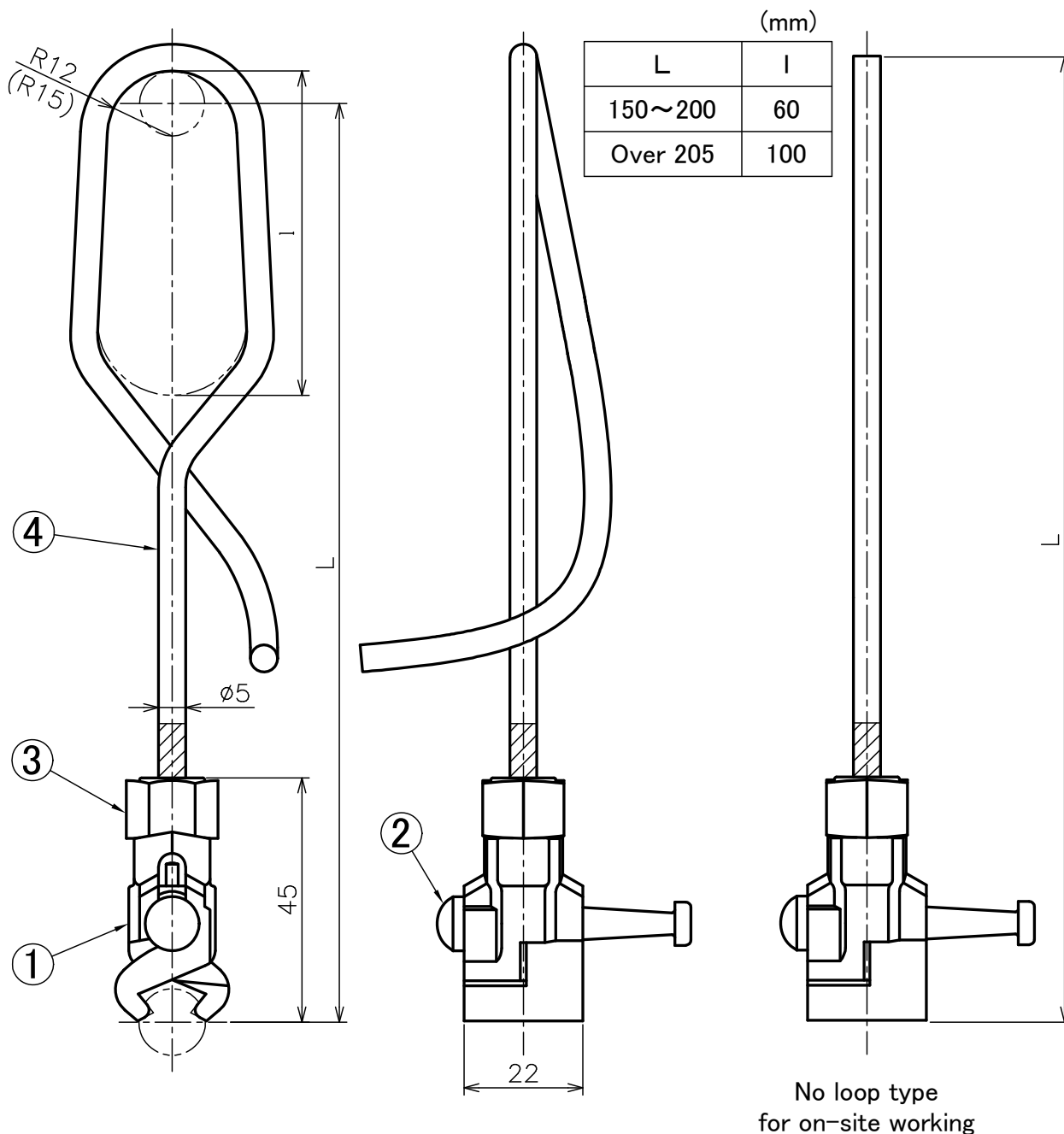
Page	English (英語)	日本語 (Japanese)
1	Hanger Ear Boltless Type D	ハンガイヤー (ボルトなし) D形
2	Hanger Ear Boltless Type B	ハンガイヤー (ボルトなし) B形
3	Double Ear Type JIS No.1	ダブルイヤー JIS形 1種 各種
4	Insulator Fittings, Suspension Type, Type L L=80	がいし金具 L形 L=80
5	Pull-Off Pulley, 1 CAC Wheel	曲線引滑車 CAC
6	Pull-off Arm, Boltless	曲線引金具 BL (ボルトなし) 各種
7	Support Fittings for Pull-off Arm Simple No.1, Boltless	アーム支持金具 曲線引金具 (ボルトなし) シンプル 1号
8	Support Fittings for Pull-off Arm Simple No.1-S, Boltless	アーム支持金具 曲線引金具 (ボルトなし) シンプル 1-S
9	Support Fittings for Steady Arm for Simple, Boltless	アーム支持金具 振止金具 (ボルトなし) シンプル用
10	Steady Arm, Boltless	振止金具 (ボルトなし) 各種
11	Feeding Fittings for Crossing, Socket Head Cap Screw	フィードイヤー (袋ねじ) 交さ用
12	Feeding Fittings for Feeding Branch, Socket Head Cap Screw	フィードイヤー (袋ねじ) き電分岐用
13	Separator for Feeding Branch	き電分岐セパレータ
14	Connector Fittings No.1, Socket Head Cap Screw	コネクタ金具 (袋ねじ) 1号
15	Connector Fittings No.2 No.3, Socket Head Cap Screw	コネクタ金具 (袋ねじ) 2号・3号
16	Connector Fittings for TMMT, Socket Head Cap Screw	コネクタ金具 (袋ねじ) TMMT
17	Connector Clamp 2B Type for Copper Wire	コネクタクランプ ちょう架線 Cu系 2B
18	Connector Clamp 2B Type Cu300mm ² -Cu185mm ²	コネクタクランプ 2B Cu300mm ² -Cu185mm ²
19	Connector Clamp 2B Type for Steel Wire	コネクタクランプ ちょう架線 St系 2B 各種
20	Crossing Clamp	交差金具
21	Messenger Wire Protector Type S	ちょう架線保護カバー S形
22	Link Type H	連結金具 H形
23	Termination Fittings BS	引留金具 BS 各種
24	Termination Fittings Wire Terminal	引留金具 ワイヤターミナル 各種
25	Compression Dead-end Fitting for Galvanized Hard Stranded Wire	引留クランプ 各種
26	Compression Parallel Sleeve for Hard Copper Stranded Wire Cu300-Cu300	平行分岐スリーブ 硬銅より線用 Cu300-Cu300
27	Compression Terminal for Hard Copper Stranded Wire Type C4	圧縮端子 硬銅より線用 C4形
28	Compression Tension Sleeve for Hard Copper Stranded Wire PH356mm ² , H325mm ² , Cu300mm ²	直線接続管 硬銅より線 PH356mm ² 、H325mm ² 、Cu300mm ²
29	Connecting Fittings for Arrester Wire PH356mm ² , H325mm ² , Cu300mm ² , for 1 Line, Lead 22mm ²	分線金具 PH356mm ² ・H325mm ² ・Cu300mm ² 1線用 リード線22mm ²
30	Wire Clip	ワイヤクリップ 各種
31	Thin Lock Nut M14 Small Type	薄板ゆるみ止めナット M14 (小形)
32	Hard Lock Nut M12	ハードロックナット M12
33	Line Guard St55mm ² L=500mm	ラインガード St55mm ² L=500mm
34	Line Guard for Wire Crossing St90mm ² L=2000mm	ラインガード (交差グリップタイプ) St90mm ² L=2000mm

Hanger Ear Boltless Type D

ハンガイヤー (ボルトなし) D形

DWG No. SH01010000
(100001)

※The dimensions are for a messenger wire of St 90mm²,
and the dimension in () is for a messenger wire of St 135mm².



L=500, SUS, Weight : 0.19kg

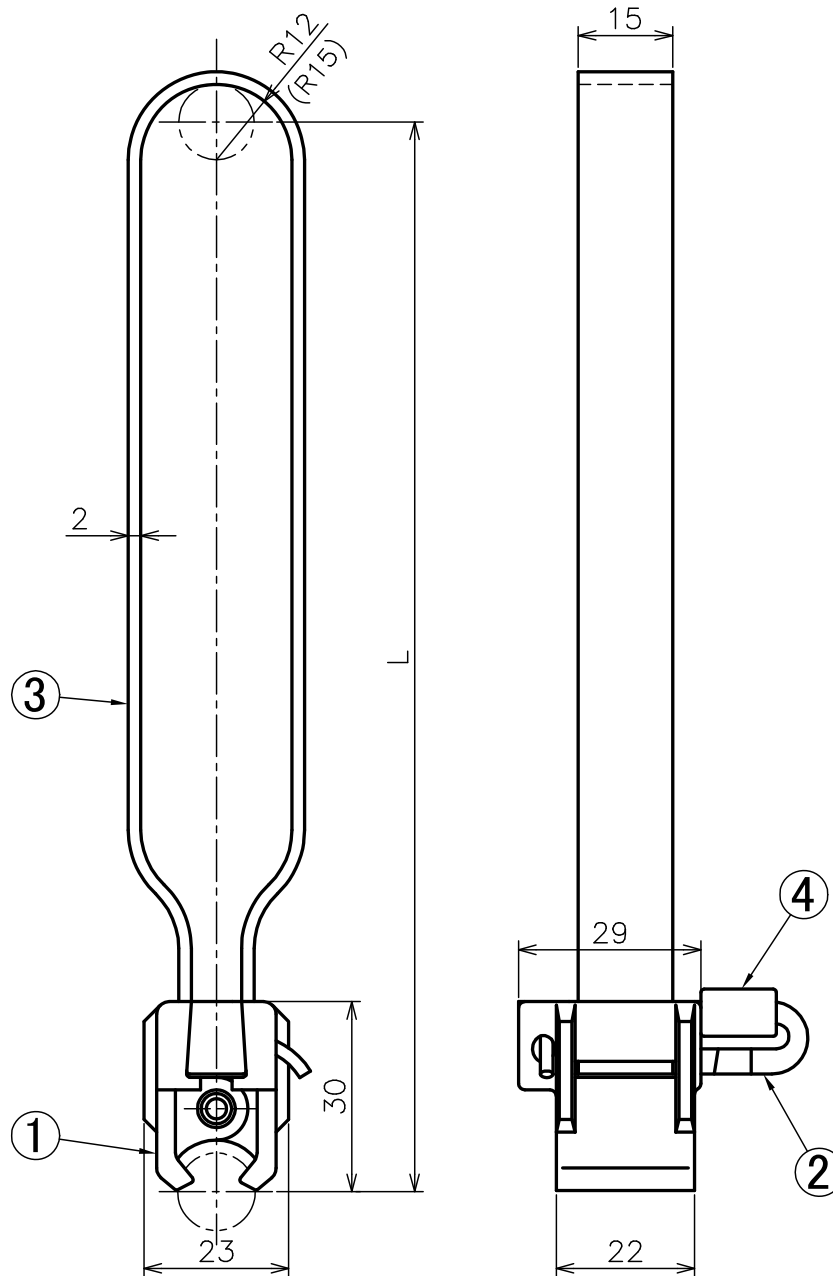
NO.	PARTS NAME	Q'TY
1	EAR	1 ^S
2	WEDGE	1
3	SLEEVE	1
4	DROPPER	1

Hanger Ear Boltless Type B

ハンガイヤー (ボルトなし) B形

DWG No. SH21010000
(103005)

※The dimensions are for a messenger wire of St 90mm²,
and the dimension in () is for a messenger wire of St 135mm².



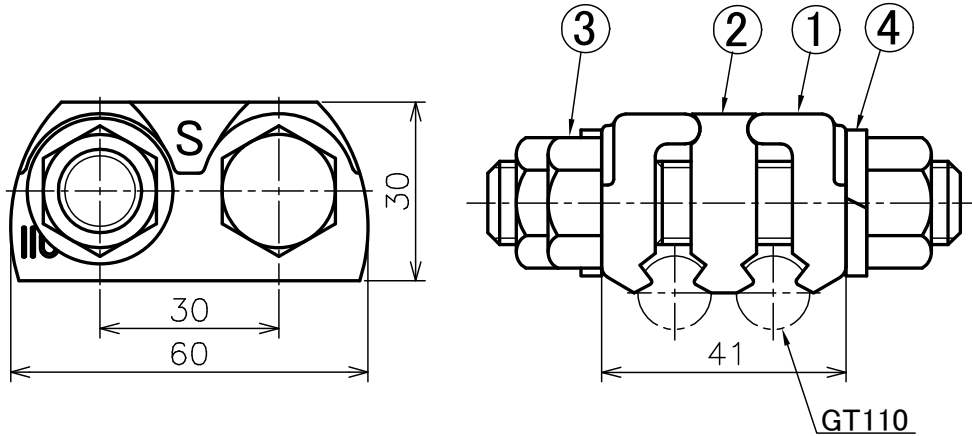
L=500, Me90, Weight : 0.32kg

NO.	PARTS NAME	Q'TY
1	EAR	1 ^S
2	WEDGE	1
3	DROPPER	1
4	MISSING PREVENTION PIN	1

Double Ear Type JIS No.1

ダブルイヤー JIS形 1種 各種

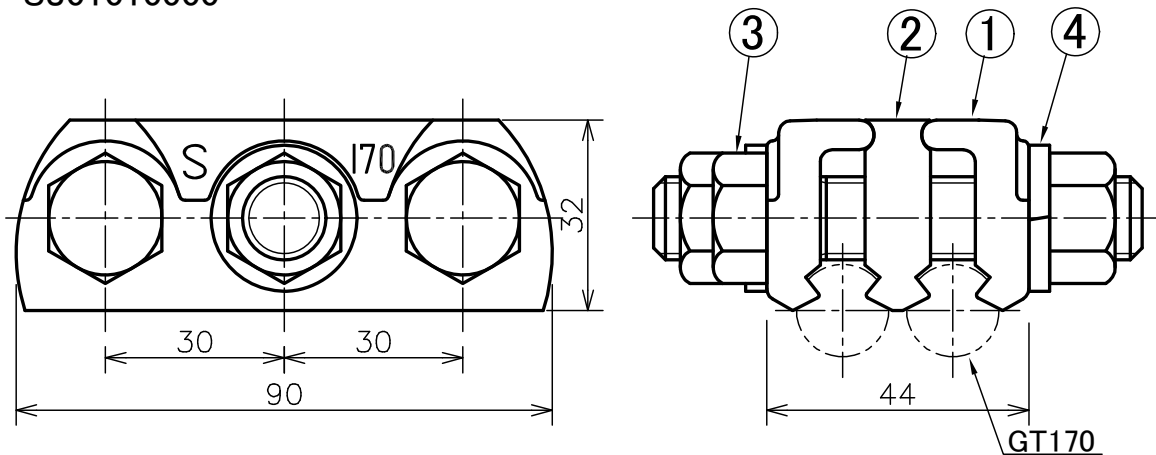
Type JIS No.1-1
SJ01020000



Weight: 0.46 kg

NO.	PARTS NAME	Q'TY
1	EAR OUTER PIECE	2
2	EAR MIDDLE PIECE	1
3	SMALL BOLT AND NUT M14 × 60 × 50	2 ^S
4	SPRING WASHER	2

Type JIS No.1-2
SJ01010000



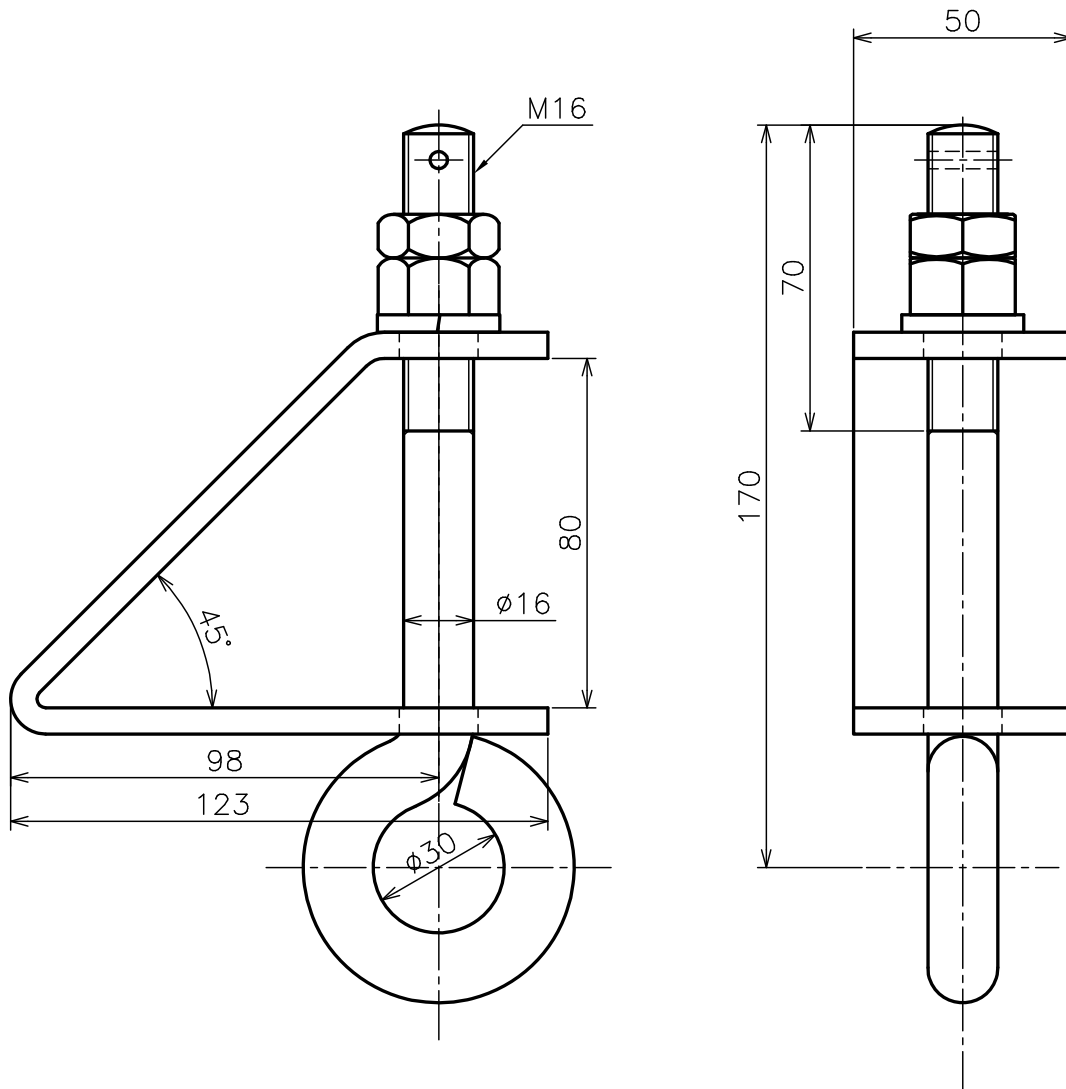
Weight: 0.76 kg

NO.	PARTS NAME	Q'TY
1	EAR OUTER PIECE	2
2	EAR MIDDLE PIECE	1
3	SMALL BOLT AND NUT M14 × 60 × 50	3 ^S
4	SPRING WASHER	3

Insulator Fittings, Suspension Type, Type L L=80

がいし金具 L形 L=80

DWG No. 90210317-1

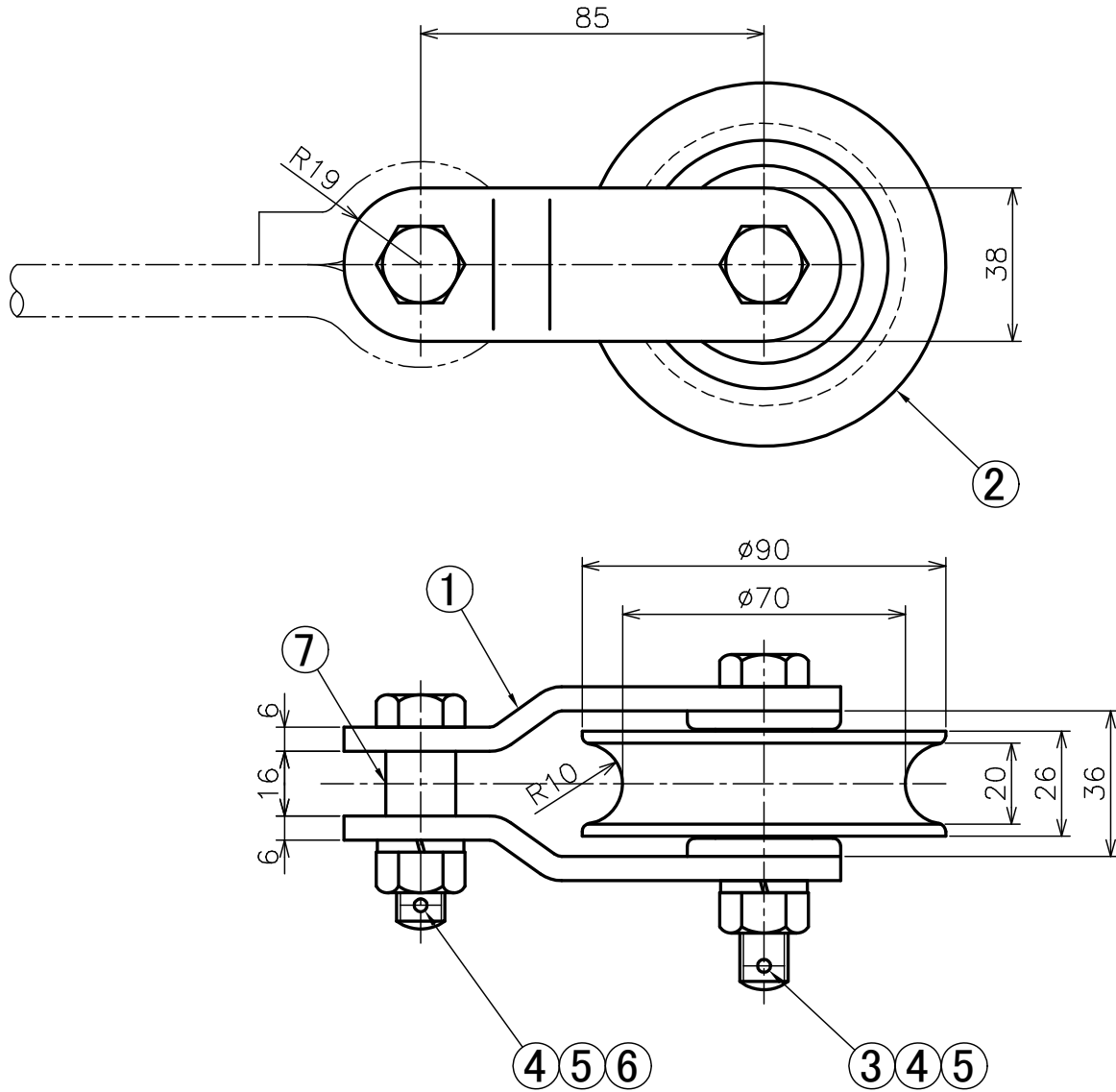


NO.	PARTS NAME	Q'TY
1	MAIN BODY	1
2	RING BOLT AND DOUBLE NUT ϕ 16 M16	1 ^S
3	SPRING WASHER	1
4	SPLIT PIN	1

Pull-Off Pulley, 1 CAC Wheel

曲線引滑車 CAC

DWG No. SR01090000
(90150115-8)



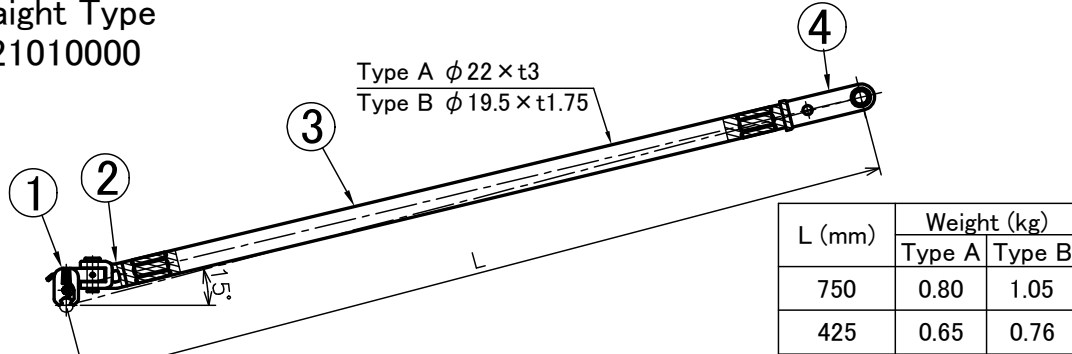
Weight : 1.38 kg

NO.	PARTS NAME	Q'TY
1	MOUNTING FRAME	1 ^S
2	PULLEY	1 ^S
3	COTTER BOLT AND NUT M12 × 75 × 30	1 ^S
4	SPRING WASHER	2
5	SPLIT PIN	2
6	COTTER BOLT AND NUT M12 × 55 × 30	1 ^S
7	BUSH	1

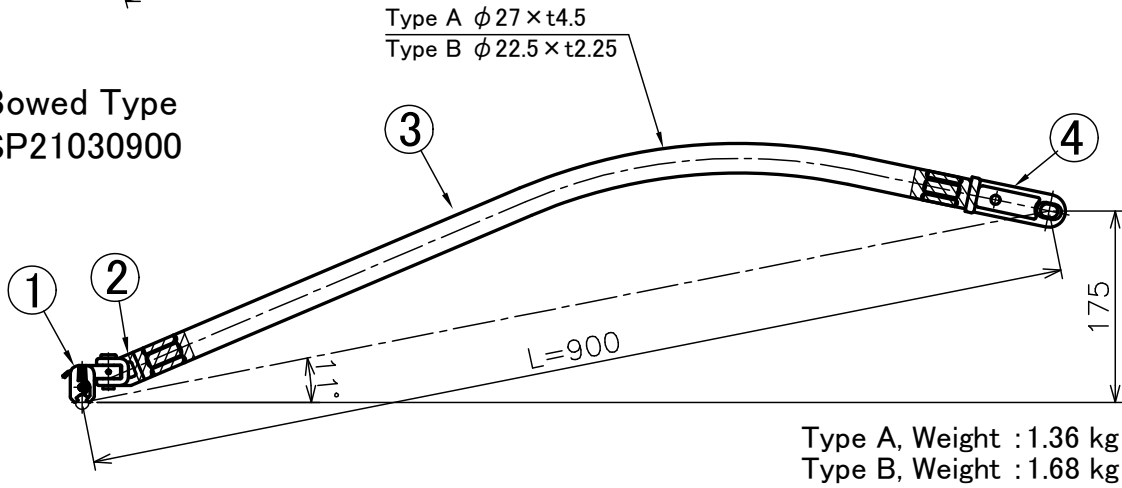
Pull-off Arm, Boltless

曲線引金具 BL (ボルトなし) 各種

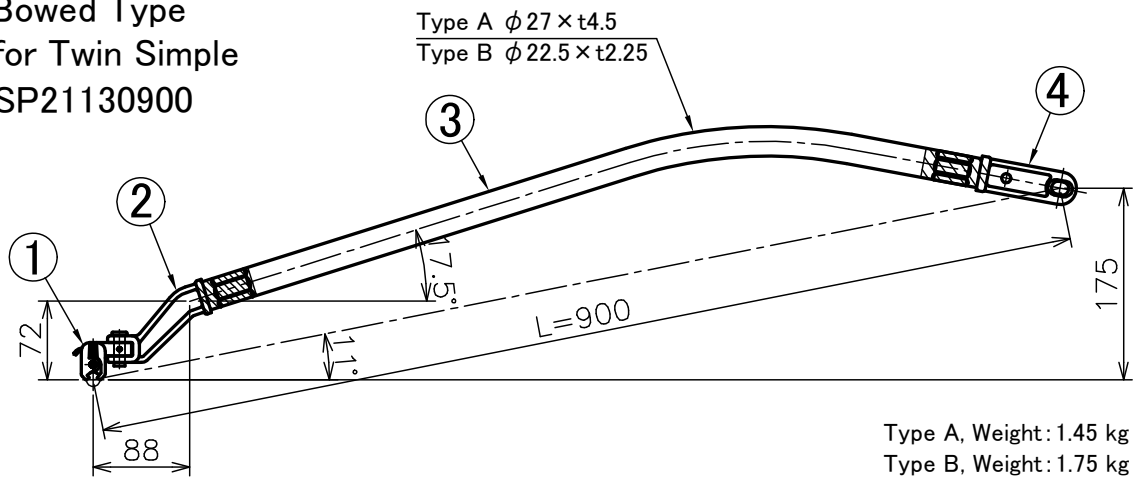
Straight Type
SP21010000



Bowed Type
SP21030900



Bowed Type
for Twin Simple
SP21130900

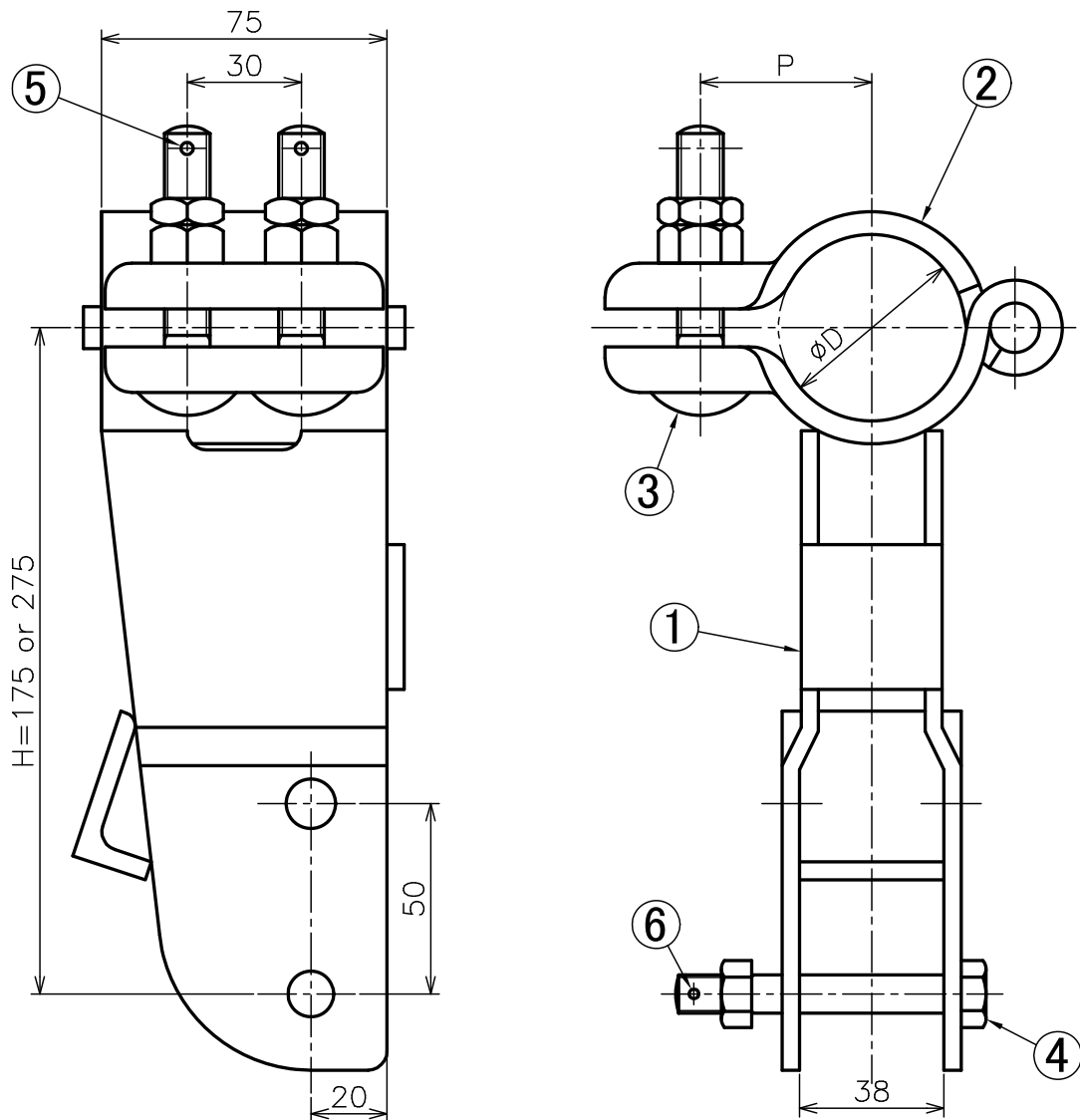


NO.	PARTS NAME	Q'TY
1	EAR	1 ^S
2	EAR MOUNTING FITTING	1
3	ARM (TYPE A-ALUMINUM, TYPE B-COPPER)	1
4	PULL EYE FITTING	1

NOTE: Type A-For general use. Type B-For corrosion resistance.

Support Fittings for Pull-off Arm Simple No.1, Boltless

アーム支持金具 曲線引金具 (ボルトなし) シンプル 1号 DWG No. SP02010000
(22100200)

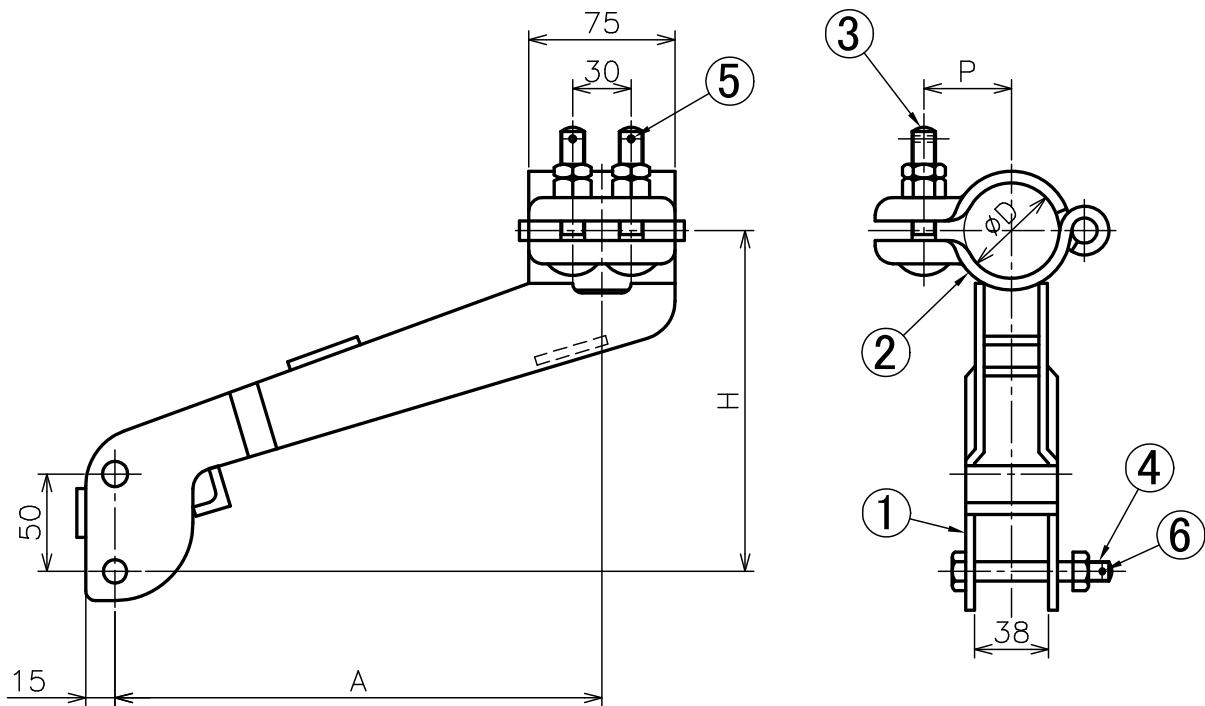


Pipe diameter D (mm)	P (mm)	Weight (kg)
42.7	42	2.11
48.6	45	2.14

NO.	PARTS NAME	Q'TY
1	MAIN BODY	1
2	BAND	1
3	CUP HEAD SQUARE NECK BOLT AND DOUBLE NUT	2 ^S
	M12 × 70 × 55	
4	COTTER BOLT AND NUT M10 × 75 × 20	1 ^S
5	SPLIT PIN A	2
6	SPLIT PIN B	1

Support Fittings for Pull-off Arm Simple No.1-S, Boltless

アーム支持金具 曲線引金具 (ボルトなし) シンプル 1-S



Pipe diameter D (mm)	P (mm)	Weight (kg)
42.7	42	2.52
48.6	45	2.56

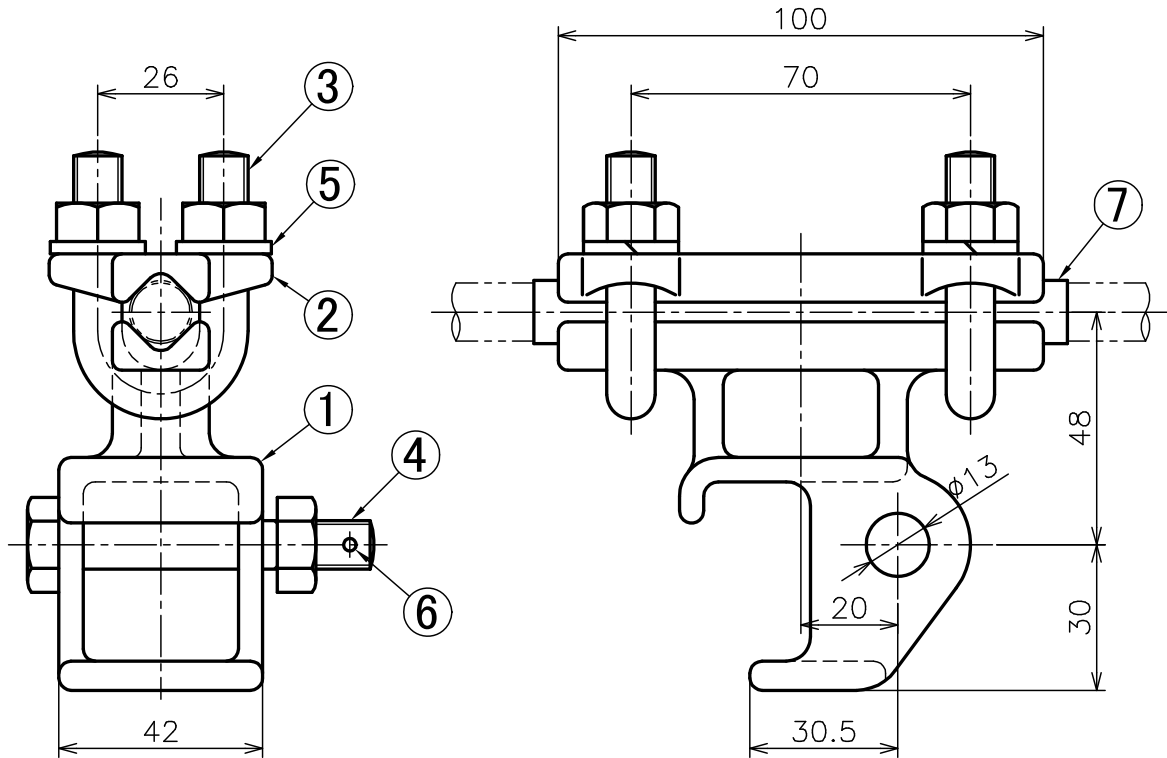
H (mm)	A (mm)	Drawing No.
175	250	SP02210000
175	350	SP02410000
225	350	95100408-1
225	450	
275	350	93200108-1

NO.	PARTS NAME	Q'TY
1	MAIN BODY	1 ^S
2	BAND	1 ^S
3	CUP HEAD SQUARE NECK BOLT AND DOUBLE NUT M12 × 70 × 55	2 ^S
4	COTTER BOLT AND NUT M10 × 75 × 20	1 ^S
5	SPLIT PIN A	2
6	SPLIT PIN B	1

Support Fittings for Steady Arm for Simple, Boltless

アーム支持金具 振止金具 (ボルトなし) シンプル用

DWG No. SP04010000
(228001)



※No.7 Protector is unnecessary when span wire is St.

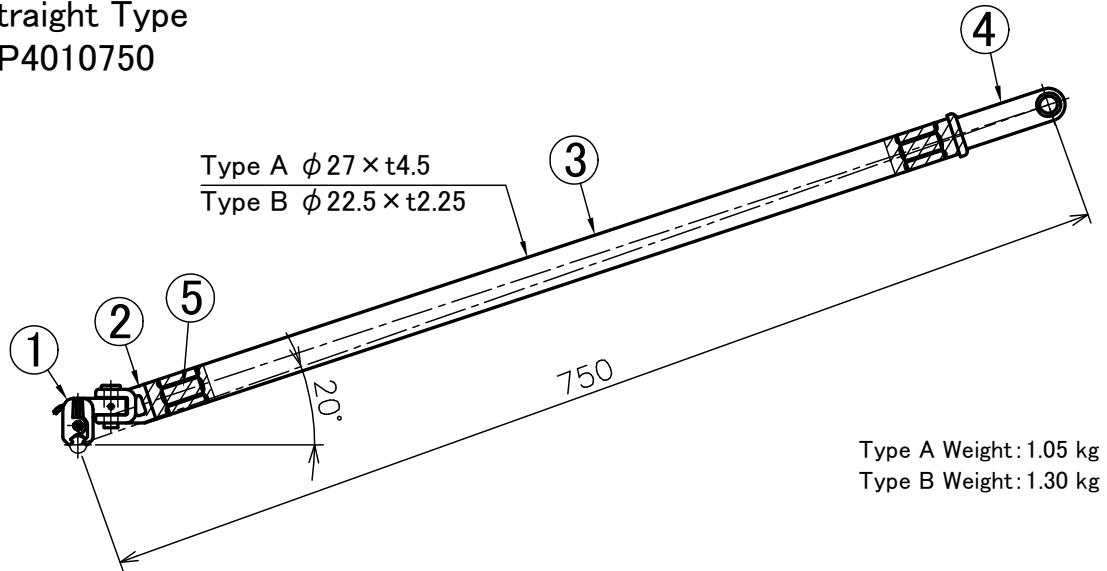
Weight : 0.80 kg

NO.	PARTS NAME	Q'TY
1	MAIN BODY	1 ^S
2	HOLD FITTINGS	2
3	U BOLT AND NUT M10	2 ^S
4	COTTER BOLT AND NUT M10 × 65 × 20	1 ^S
5	SPRING WASHER	4
6	SPLIT PIN	1
7	PROTECTIVE COVER	1

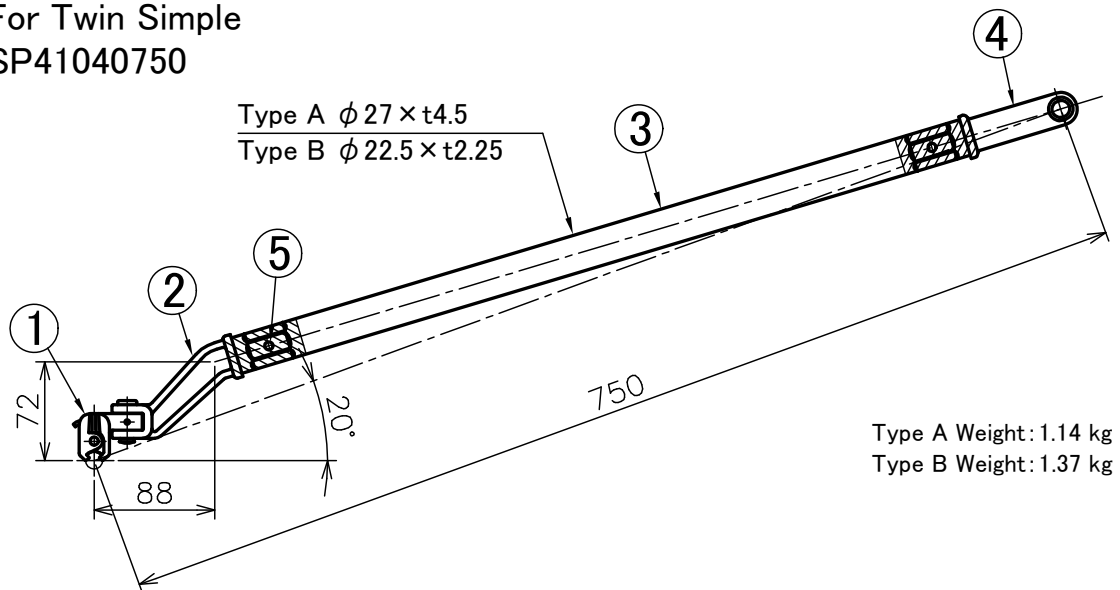
Steady Arm, Boltless

振止金具 (ボルトなし) 各種

Straight Type SP4010750



For Twin Simple SP41040750



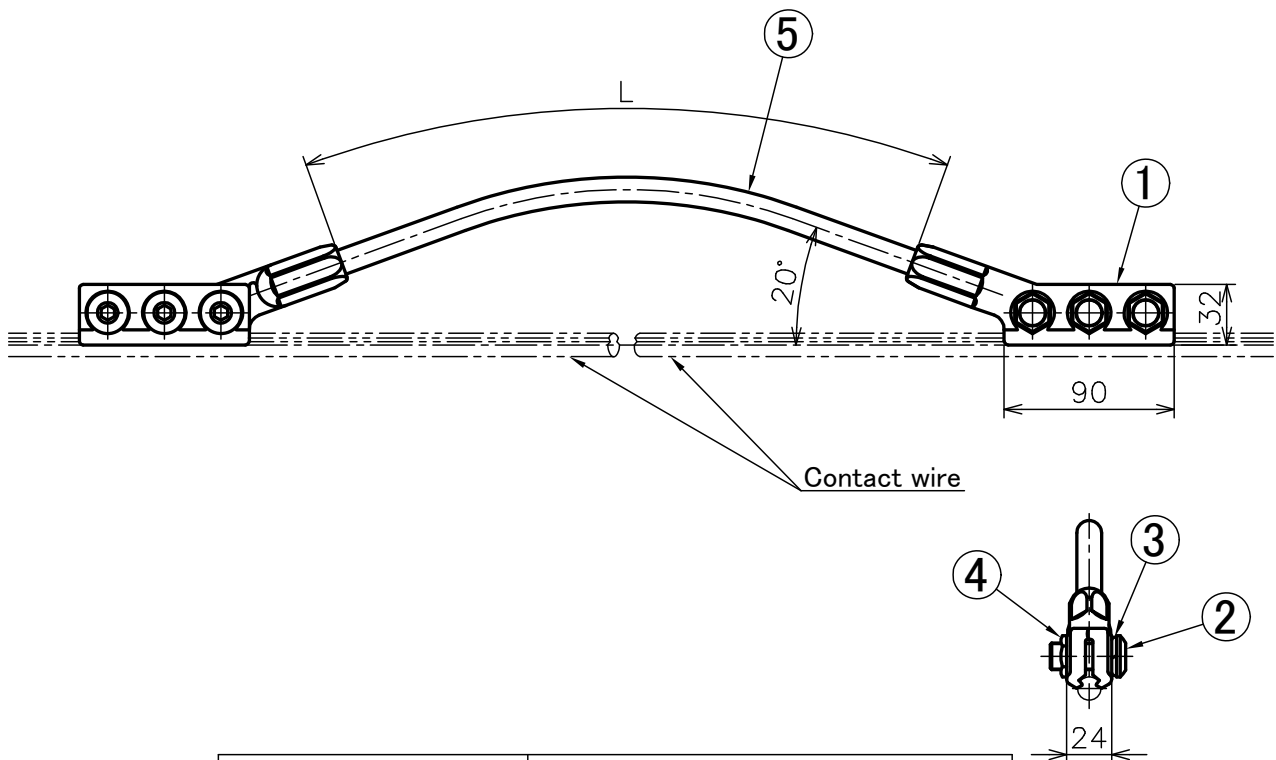
NO.	PARTS NAME	Q'TY
1	EAR	1 ^S
2	EAR MOUNTING FITTING	1
3	ARM (TYPE A-ALUMINUM, TYPE B-COPPER)	1
4	PULL EYE FITTING	1
5	ROUND HEAD RIVET	2

NOTE: Type A-For general use. Type B-For corrosion resistance.

Feeding Fittings for Crossing, Socket Head Cap Screw

フィードイヤー (袋ねじ) 交さ用

DWG No. SF11020000
(270002)



Standard nominal dimension L	Where to use (reference)
300	Space between contact wires of Twin simple catenary.
600	If there is no tension balancer.
800	
1000	Supported by a spring when there is a tension balancer.
1200	

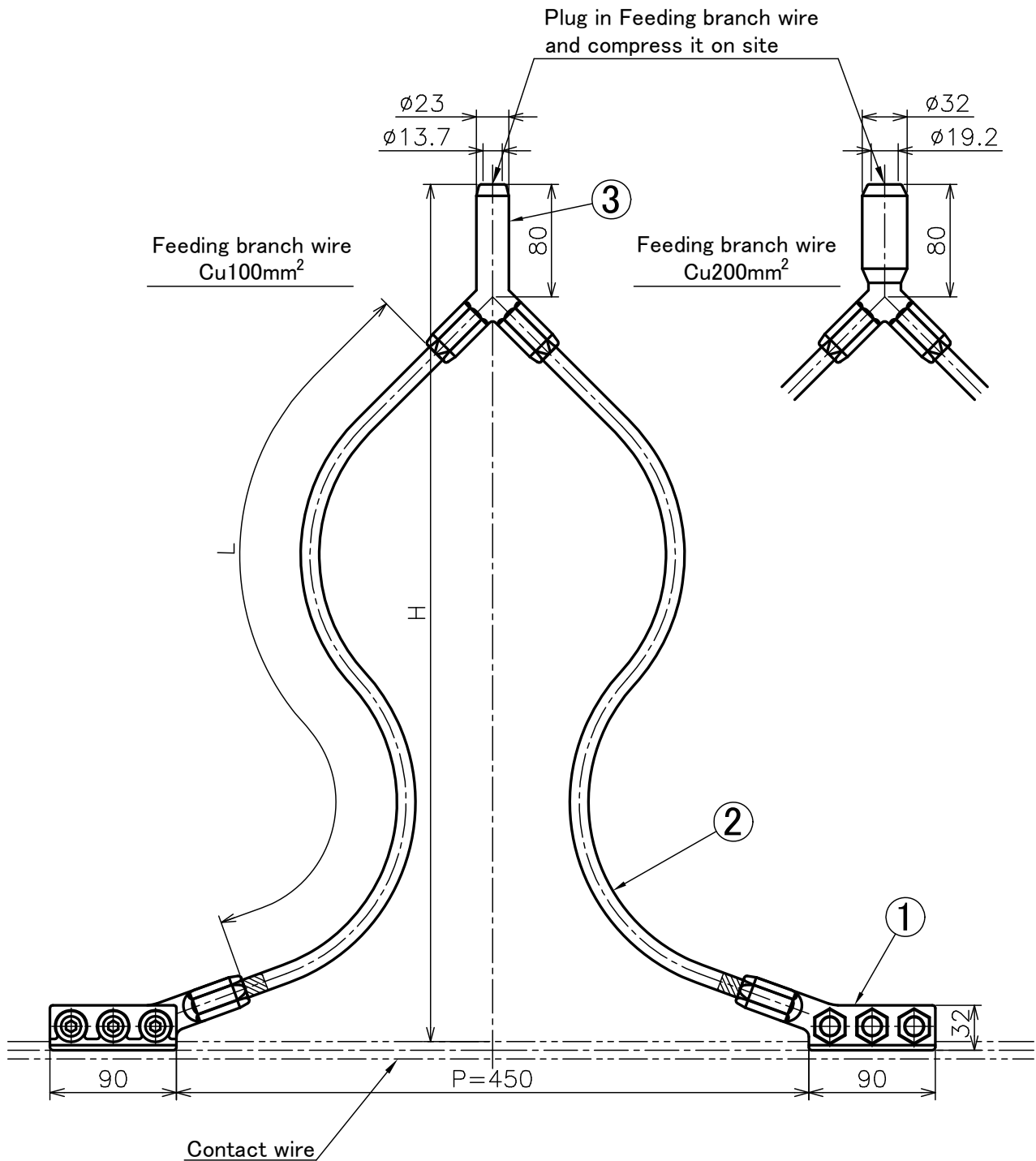
L=800, Weight : 1.96 kg

NO.	PARTS NAME	Q'TY
1	EAR	2 ^S
2	SOCKET HEAD CAP SCREW M14 × 32 × 24	6
3	T.T SPRING WASHER	6
4	THIN LOCK NUT	6
5	CONDUCTOR Cu100mm ²	1

Feeding Fittings for Feeding Branch, Socket Head Cap Screw

フィードイヤー (袋ねじ) き電分岐用

DWG No. SF11050000
(271002)



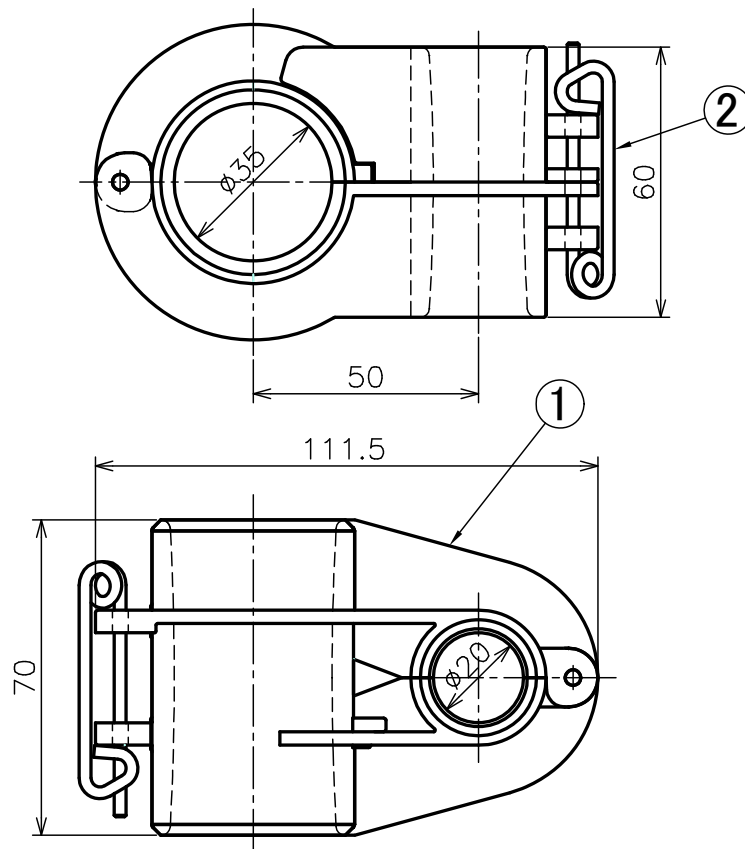
H=610, 100:100:100, Weight: 2.78 kg

NO.	PARTS NAME	Q'TY
1	EAR	2 ^S
2	CONDUCTOR Cu100mm ²	2
3	BRANCH JOINT TUBE (TYPE Y)	1

Separator for Feeding Branch

き電分岐セパレータ

DWG No. SR01080000
(90190626-1)



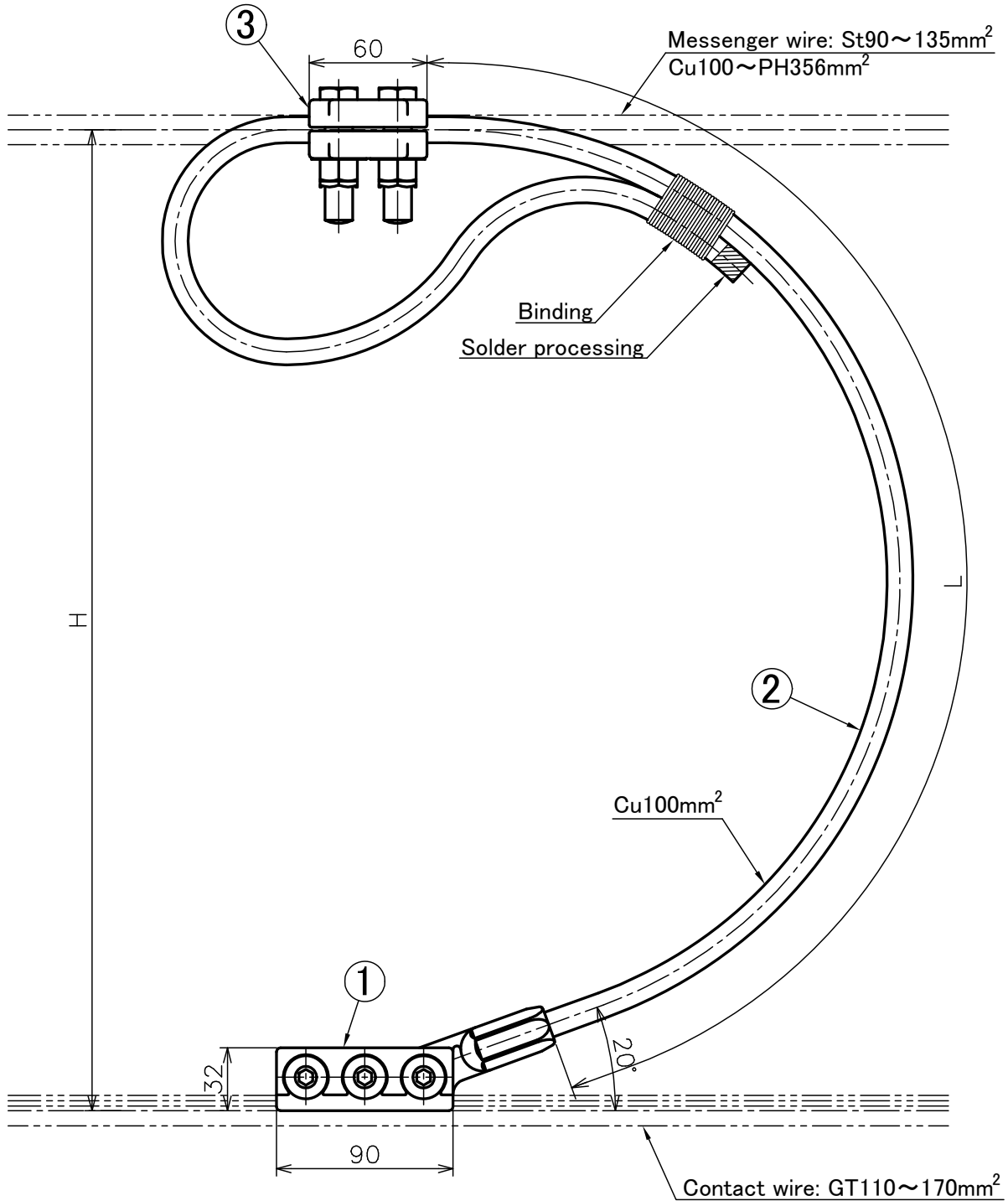
Weight: 0.12 kg

NO.	PARTS NAME	Q'TY
1	MAIN BODY	2
2	RETAINING PIN	2

Connector Fittings No.1, Socket Head Cap Screw

コネクタ金具 (袋ねじ) 1号

DWG No. SF01120000
(251012)

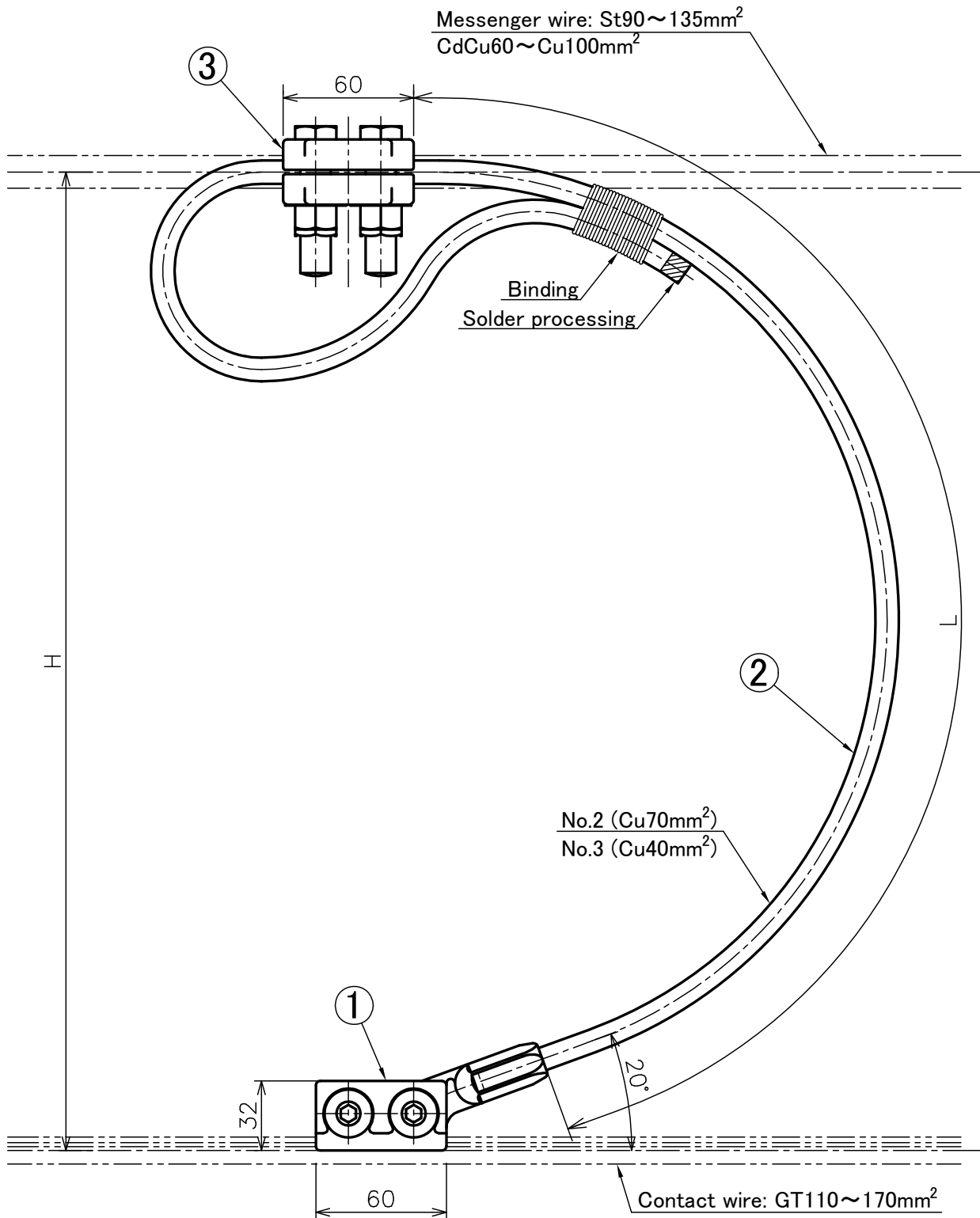


NO.	PARTS NAME	Q'TY
1	EAR	1 ^S
2	CONDUCTOR	1
3	CONNECTOR CLAMP 2B	1 ^S

Connector Fittings No.2 No.3, Socket Head Cap Screw

コネクタ金具 (袋ねじ) 2号・3号

DWG No. SF01120000
(251012)

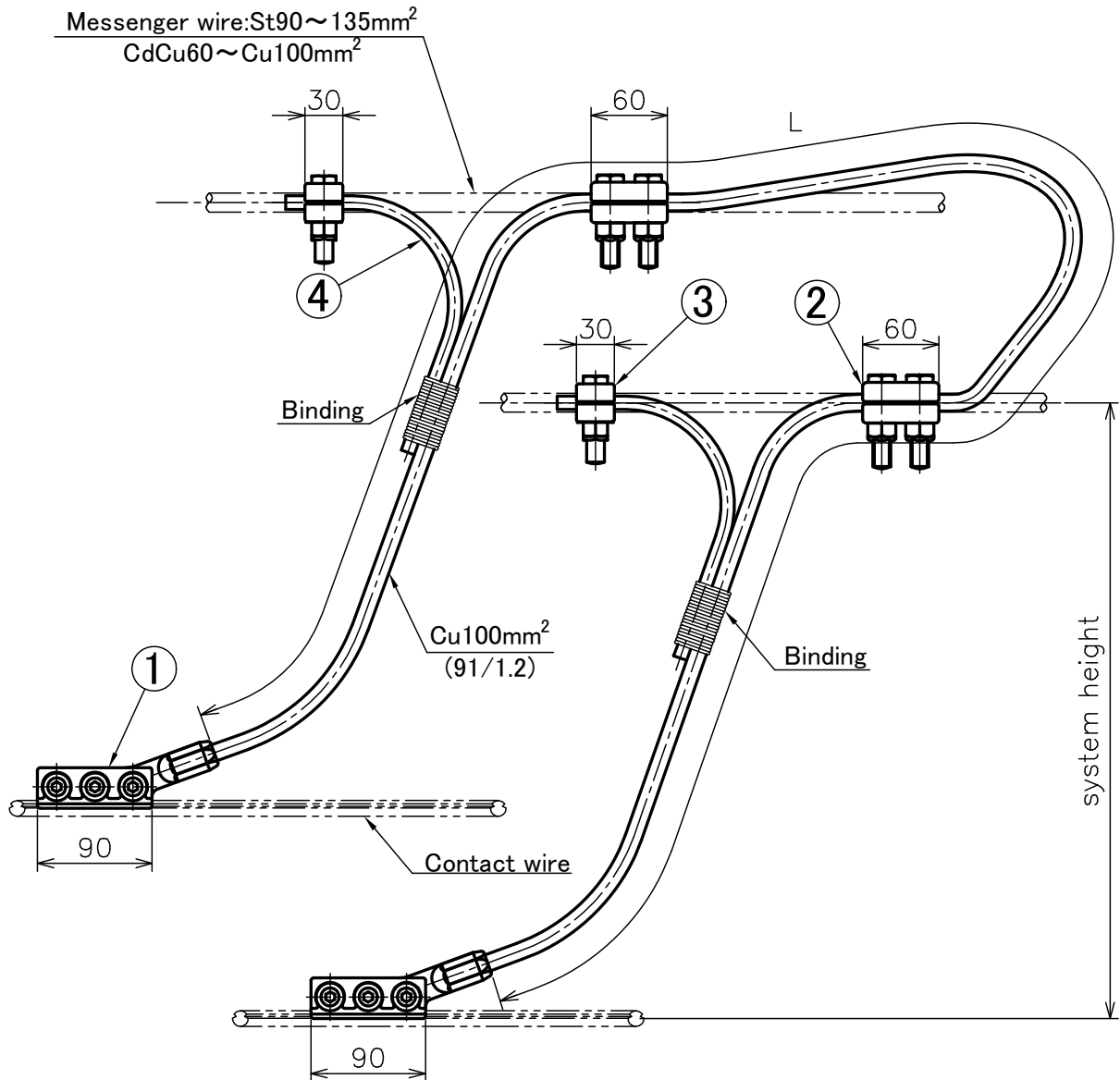


NO.	PARTS NAME	Q'TY
1	EAR	1 ^S
2	CONDUCTOR	1
3	CONNECTOR CLAMP 2B	1 ^S

Connector Fittings for TMMT, Socket Head Cap Screw

コネクタ金具 (袋ねじ) TMMT

DWG No. SF11010000
(270001)

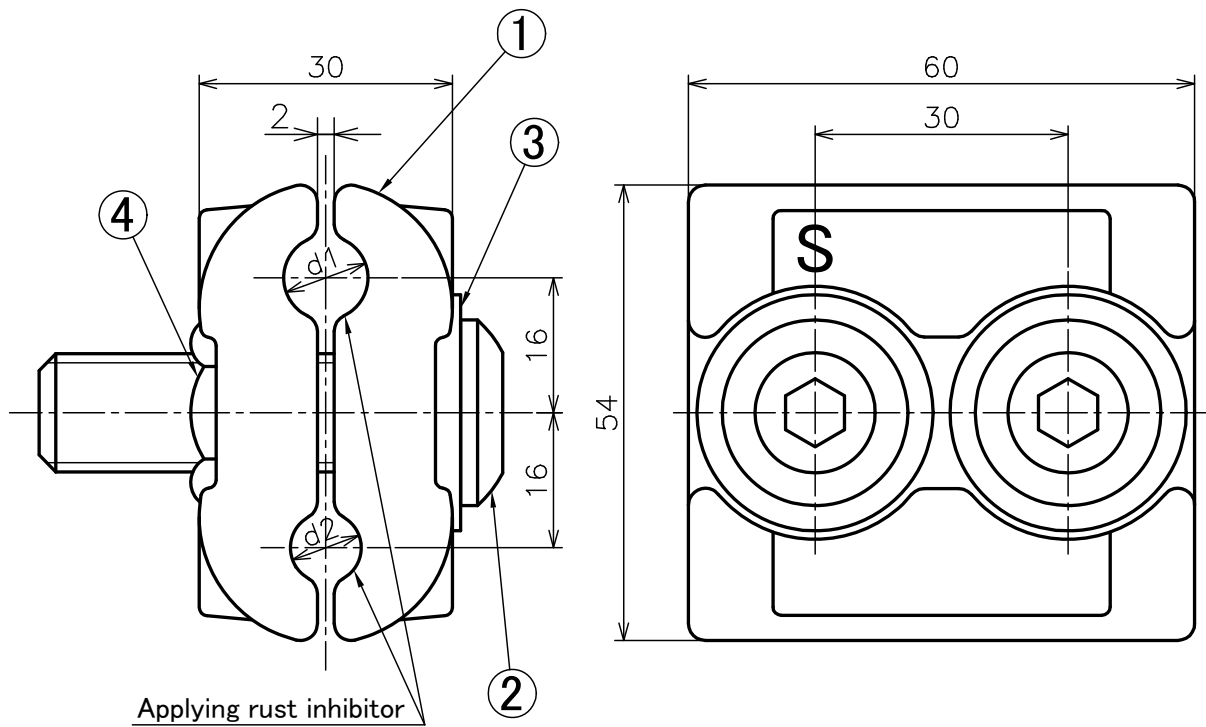


NO.	PARTS NAME	Q'TY
1	EAR	1 ^S
2	CONNECTOR CLAMP 2B TYPE	2 ^S
3	CONNECTOR CLAMP 1B TYPE	2 ^S
4	AUXILIARY CONDUCTOR	2

Connector Clamp 2B Type for Copper Wire

コネクタクランプ ちょう架線 Cu系 2B

DWG No. SF41050000
(263001)



(mm)

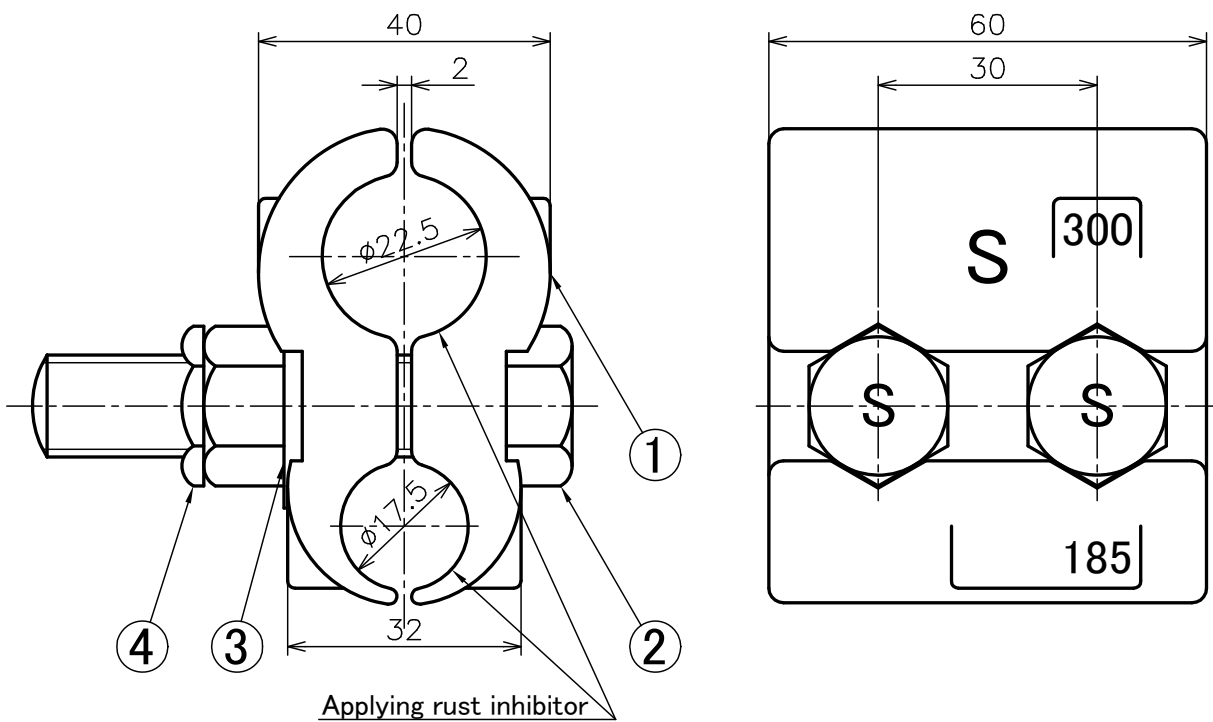
Messenger wire	d1	Conductor	d2
Cu100mm ²	13.0	Cu100mm ²	13.2
		Cu70mm ²	10.8
CdCu80mm ²	11.5	Cu60mm ²	10.0
CdCu60mm ²	10.0	Cu40mm ²	8.4

NO.	PARTS NAME	Q'TY
1	CLAMP	1 ^S
2	SOCKET HEAD CAP SCREW M14 × 50	2
3	CONICAL SPRING WASHER	2
4	THIN LOCKNUT	2

Connector Clamp 2B Type Cu300mm²-Cu185mm²

コネクタクランプ 2B Cu300mm²-Cu185mm²

DWG No. 26100500-1

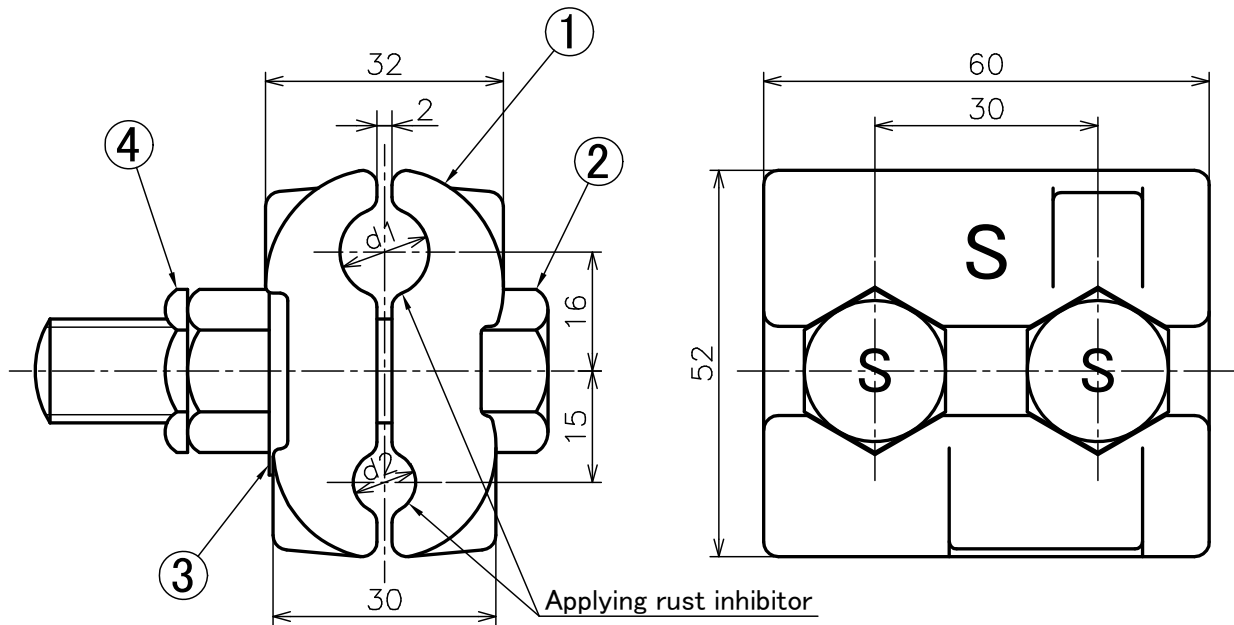


NO.	PARTS NAME	Q'TY
1	CLAMP	1 ^S
2	BOLT AND NUT M14 × 63 × 53	2 ^S
3	SPRING WASHER	2
4	THIN LOCK NUT	2

Connector Clamp 2B Type for Steel Wire

コネクタクランプ ちょう架線 St系 2B 各種

DWG No. SF41030000
(261001)



(mm)

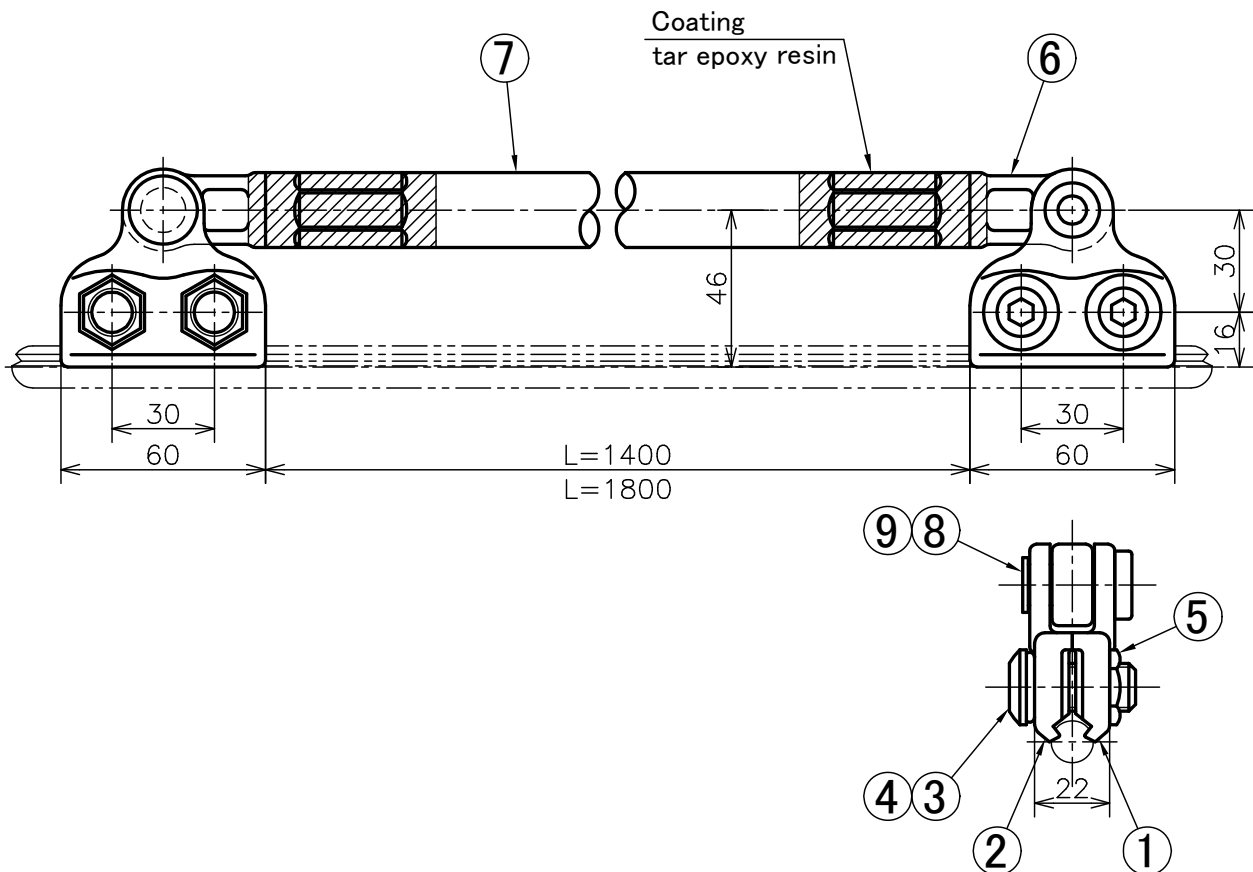
Messenger wire	d1	Conductor	d2
St135mm ²	15.0	Cu100mm ²	13.2
		Cu70mm ²	10.8
		Cu60mm ²	10.0
		Cu40mm ²	8.4
St90mm ²	12.0	Cu100mm ²	13.2
		Cu70mm ²	10.8
		Cu60mm ²	10.0
		Cu40mm ²	8.4
Span rod φ 13mm	13.5	Cu100mm ²	13.2
		Cu70mm ²	10.8
		Cu60mm ²	10.0
		Cu40mm ²	8.4

NO.	PARTS NAME	Q'TY
1	CLAMP	1 ^S
2	SMALL HEAD BOLT AND NUT M14 × 60 × 40	2 ^S
3	CONICAL SPRING WASHER	2
4	THIN LOCK NUT	2

Crossing Clamp

交差金具

DWG No. SR01120000
(300004-1)

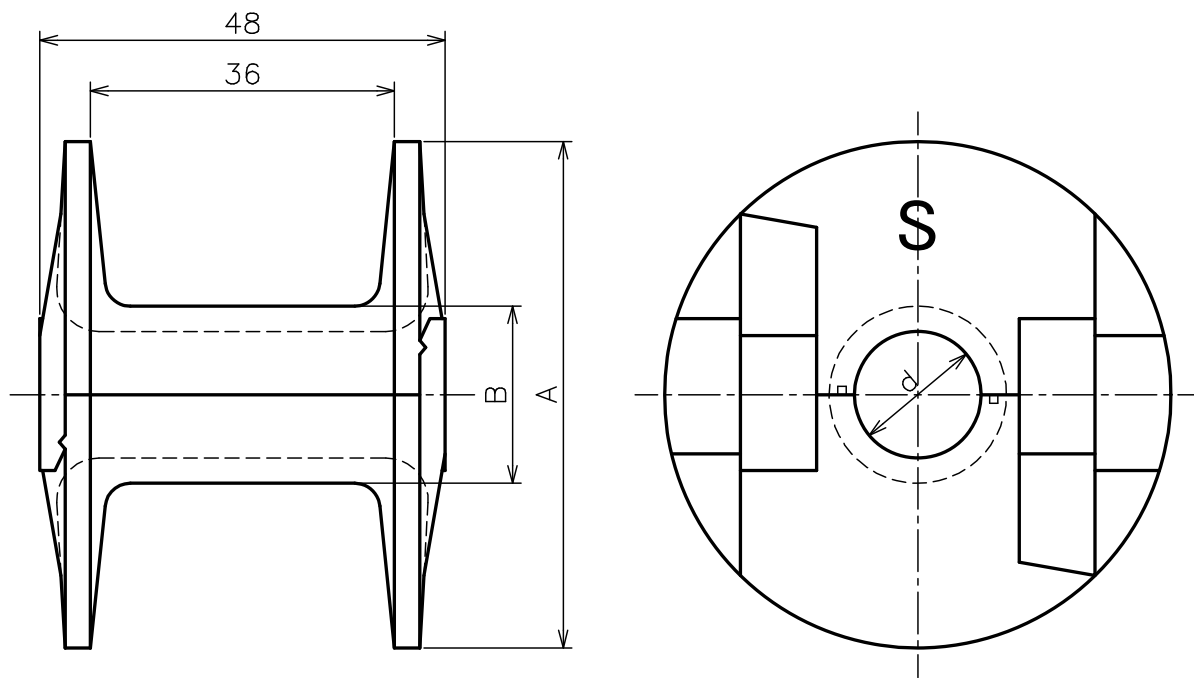


NO.	PARTS NAME	Q'TY
1	EAR A PIECE	2
2	EAR B PIECE	2
3	SOCKET HEAD CAP SCREW	6
4	T.T SPRING WASHER	6
5	THIN LOCK NUT	6
6	EAR FITTING	2
7	ALMINUM PIPE	1
8	RIVET	2
9	PROTECTIVE TUBE	2

Messenger Wire Protector Type S

ちょう架線保護カバー S形

DWG No. SC01010000
(310005)



(mm)

Applicable wire	d	A	B
60~100mm ²	15	60	21
135~200mm ²	20	64	26
325mm ²	28	70	34

※Colors are black, yellow, green, white, sky blue, orange and pink.

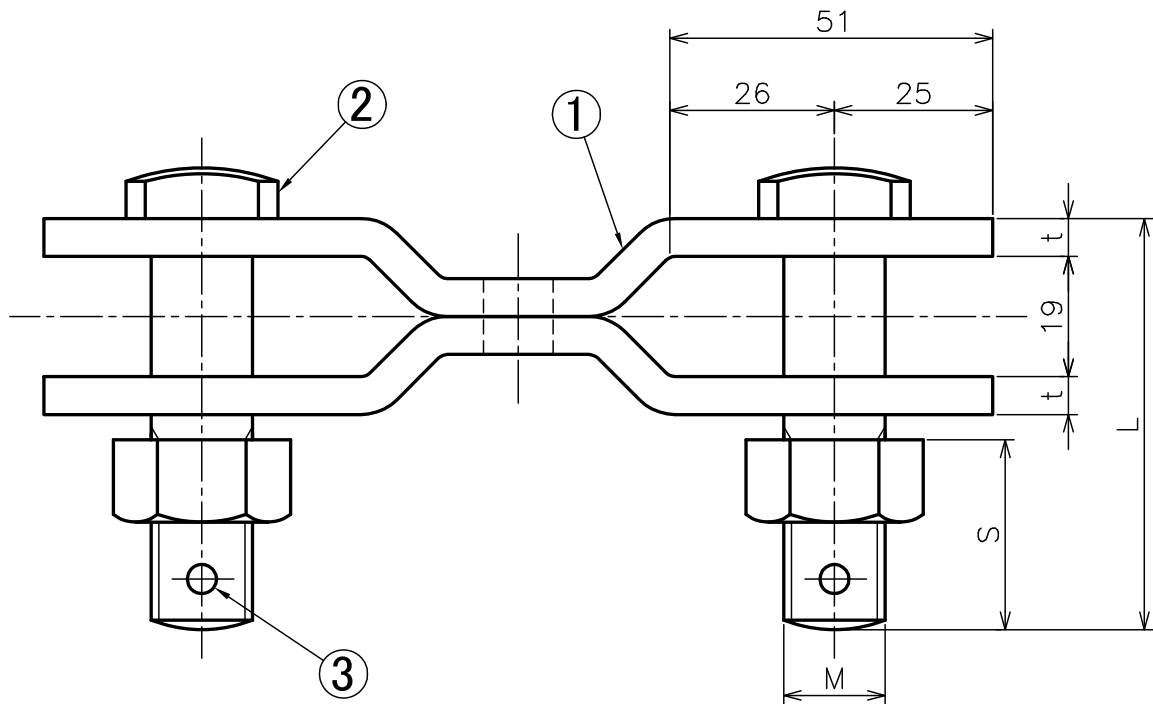
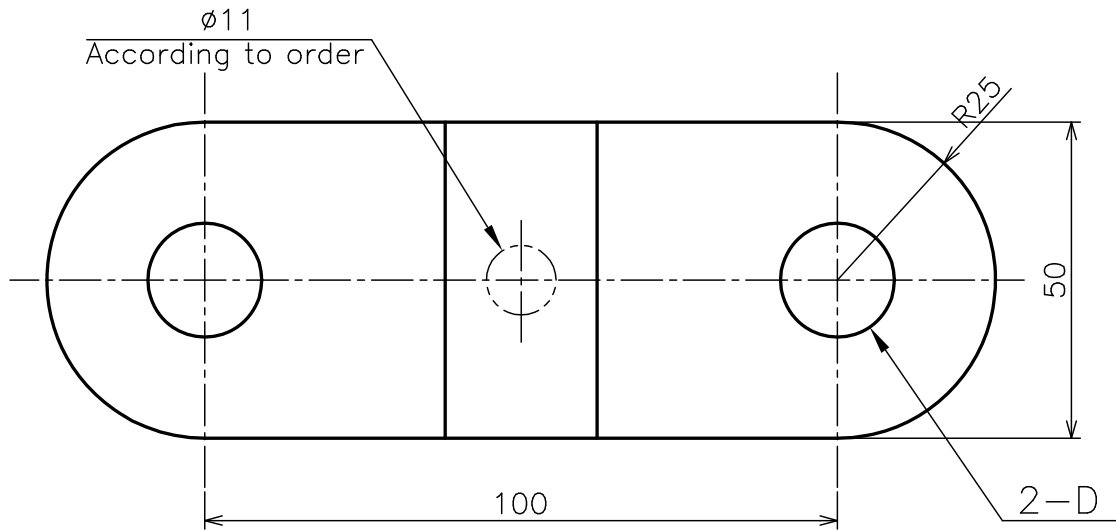
Weight: 0.06 kg

NO.	PARTS NAME	Q'TY
1	MAIN BODY	1 ^S

Link Type H

連結金具 H形

DWG No. SM11170000
(392022)



(mm)

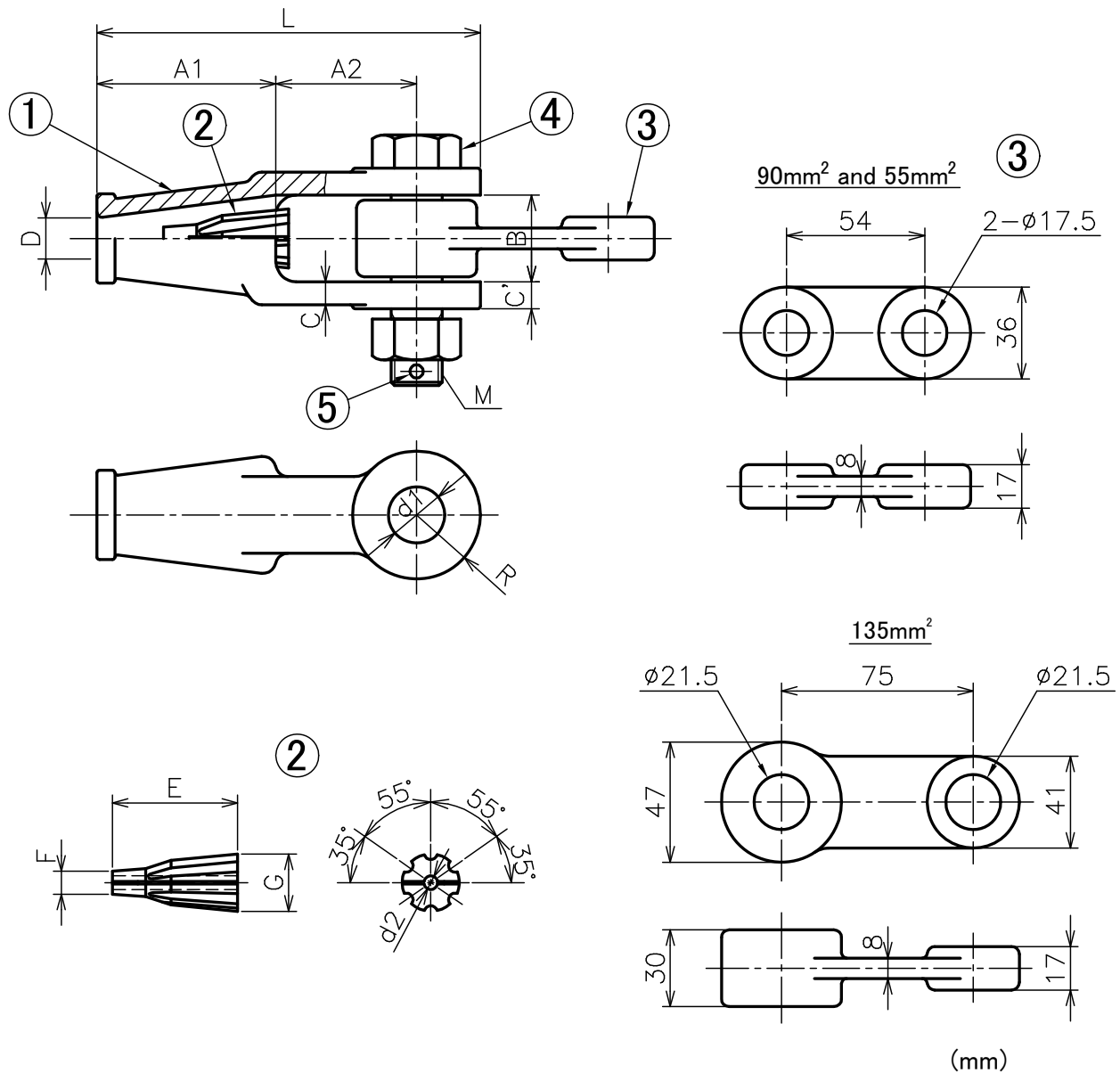
t	D	D'	M × L × S	M' × L × S	Weight
6	18	18	M16 × 65 × 30	M16 × 65 × 30	0.40 kg
9	22	22	M20 × 85 × 40	M20 × 85 × 40	0.58 kg
	18	18	M16 × 70 × 30	M16 × 70 × 30	
			M16 × 65 × 20		

NO.	PARTS NAME	Q'TY
1	MAIN BODY	1
2	COTTER BOLT AND NUT	2 ^s
3	SPLIT PIN	2

Termination Fittings BS

引留金具 BS 各種

DWG No. SM04010000
(382001)



Wire type	Main body										Cotter				Split pin	Weight
	A1	A2	L	B	C	C'	D	M	d1	R	E	F	G	d2		
st135	70	55	150	34	9	10.5	16	20	22	25	49	7.4	22.4	5.4	ø 4x40	0.60 kg
st90	48	40	108	24.5	7	8.5	13	16	18	20	36	6.4	17.8	4.4	ø 4x40	0.81 kg
st55	38	40	96	21	5	6.5	11.5	14	16	18	32	5.6	15.3	3.6	ø 3.2x32	1.78 kg

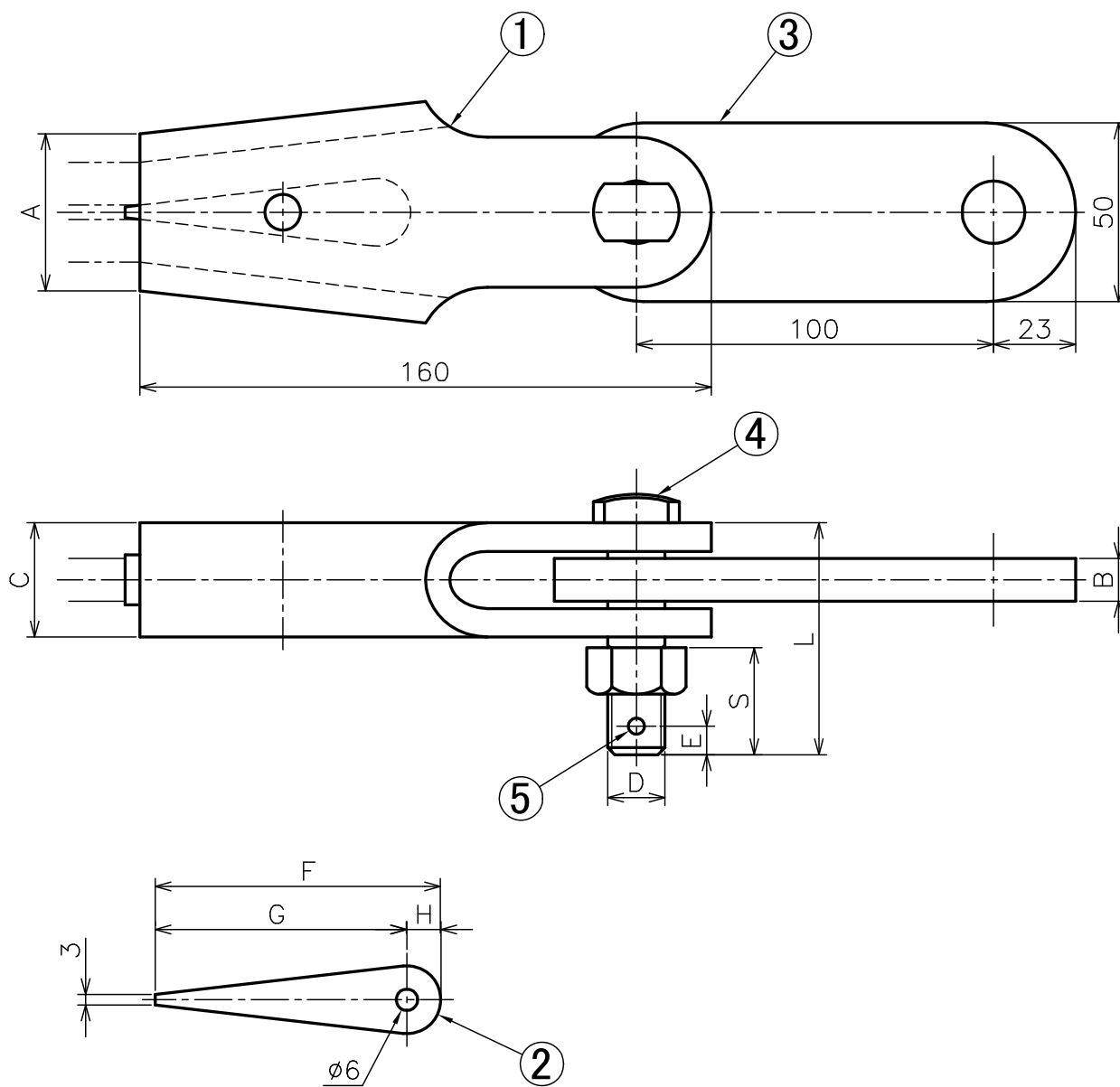
NO.	PARTS NAME	Q'TY
1	MAIN BODY	1
2	WEDGE	1
3	STRAP	1
4	COTTER BOLT AND NUT	1 ^s
5	SPLIT PIN	1

Termination Fittings Wire Terminal

引留金具 ワイヤターミナル 各種

DWG No. SM03010000

(38100100)



Type	Dimensions (mm)									
	A	B	C	D	L	S	E	F	G	H
WTS-90	44	12	32	16	70	30	8	80	70.5	9.5
WTS-135	50	16	35	20	80	40	10	83	73	10

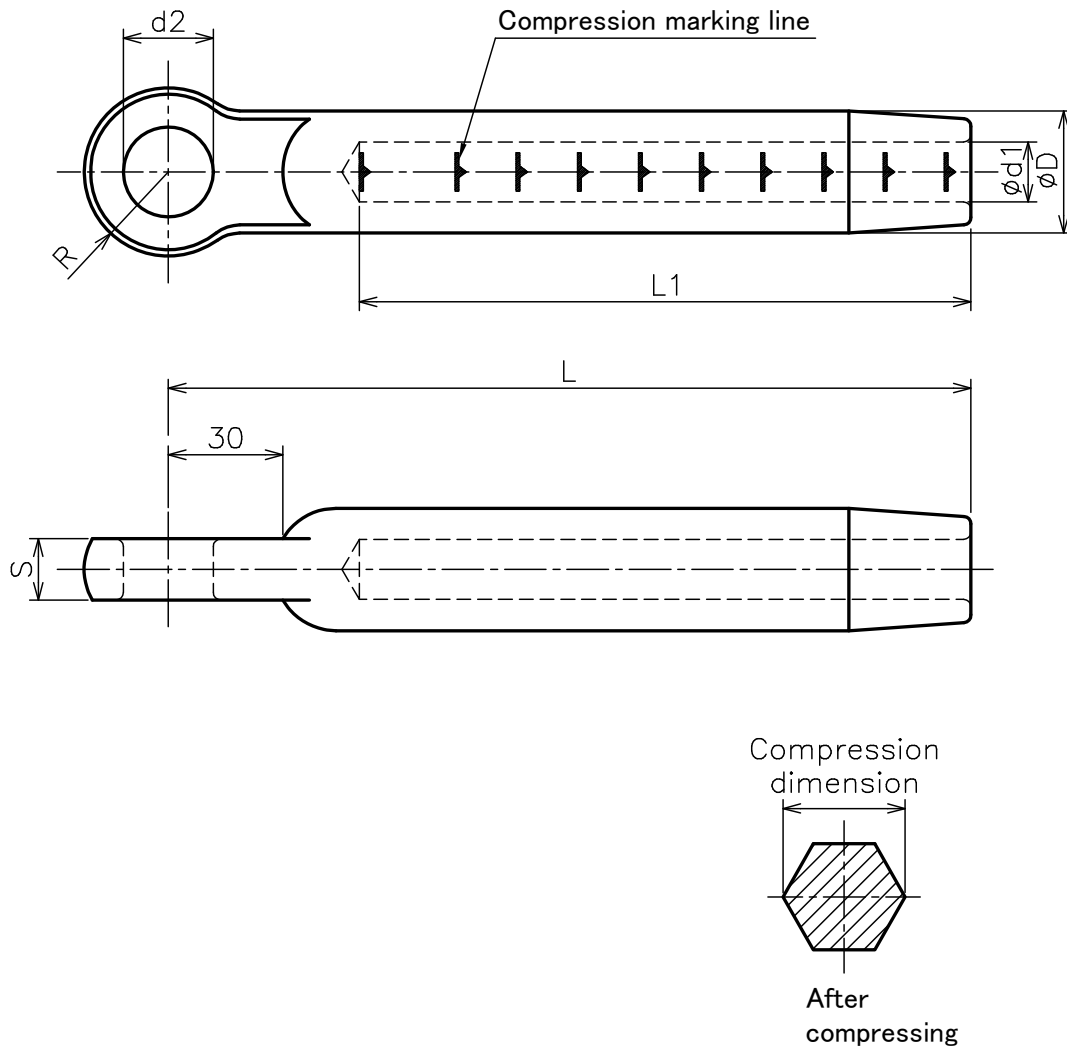
NO.	PARTS NAME	Q'TY
1	MAIN BODY	1
2	WEDGE	1
3	STRAP	1
4	COTTER BOLT AND NUT	1 ^s
5	SPLIT PIN	1

Compression Dead-end Fitting for Galvanized Hard Stranded Wire

引留クランプ 各種

DWG No. SR01350000

(90150117-24)



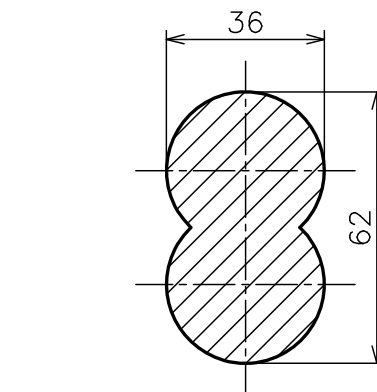
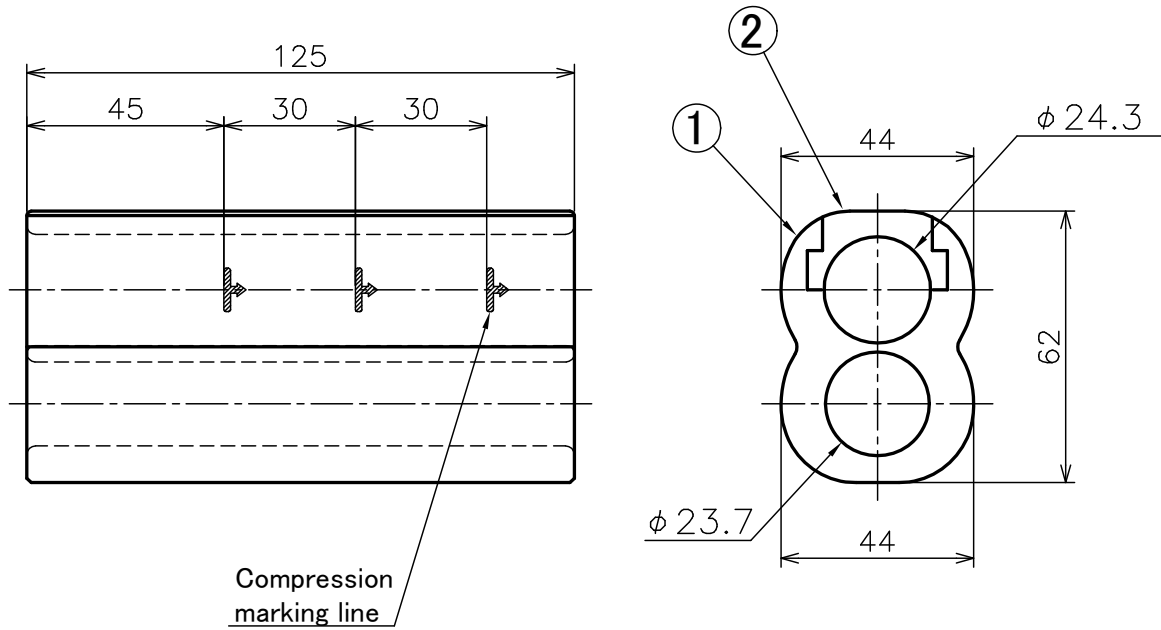
Nominal cross-sectional area	d1	D	L1	L	R	S	d2	Compression dimension	Weight
135mm ²	15.7	32	160	210	22	16	23.5	32	1.02 kg
90mm ²	12.5	23	150	190	19	14	20.5	23	0.47 kg
55mm ²	10.1	23	105	145	19	12	18.0	23	0.40 kg

NO.	PARTS NAME	Q'TY
1	MAIN BODY	1

Compression Parallel Sleeve for Hard Copper Stranded Wire Cu300-Cu300

平行分岐スリーブ 硬銅より線用 Cu300-Cu300

DWG No. 90210121-1

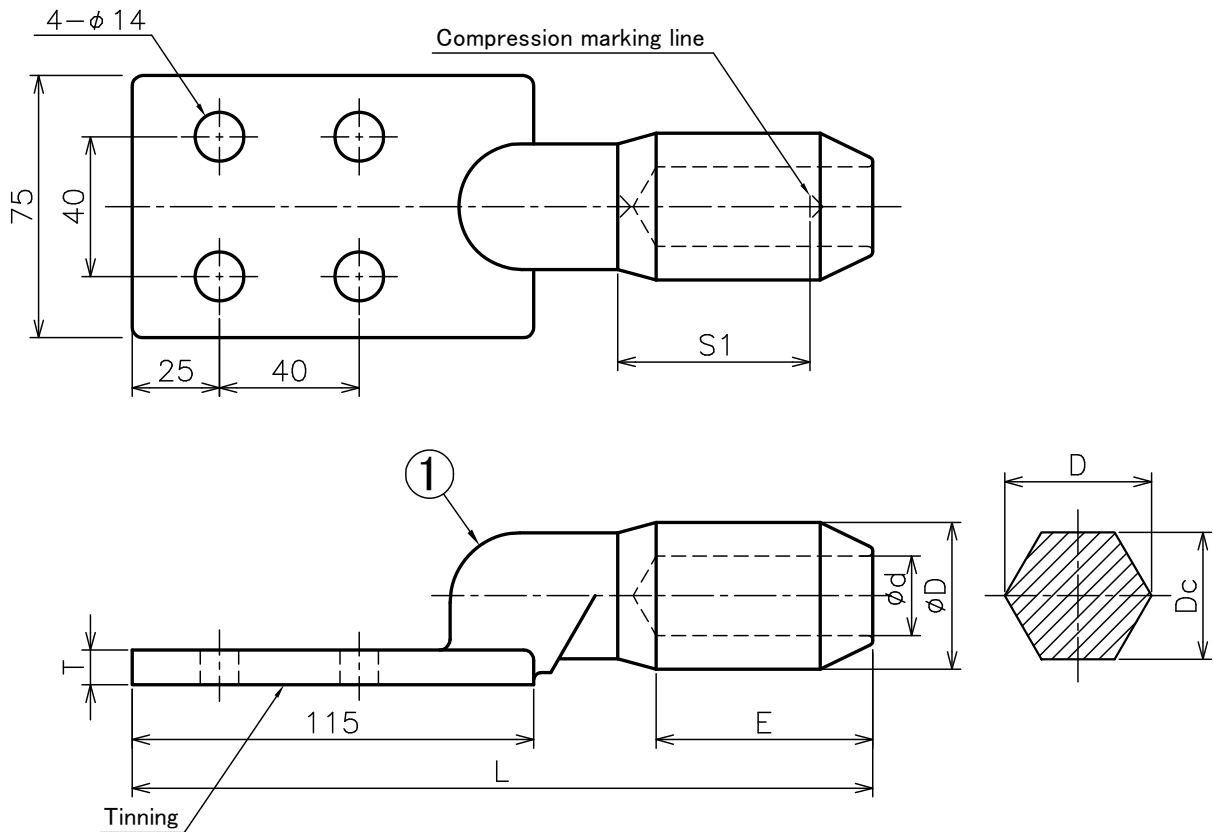


Dimension after compressing
Compression die P3636

NO.	PARTS NAME	Q'TY
1	MAIN BODY	1
2	SLIDE LID	1

Compression Terminal for Hard Copper Stranded Wire Type C4

圧縮端子 硬銅より線用 C4形



Title Drawing No.	No.	Applicable wire(mm ²)	Strand configuration (line/mm)	Strand outer diameter (mm)	Dimensions(mm)								Compression dice Type
					D	d	E	T	L	S1	Dc		
For Hard Copper Stranded Wire SE99010000	01	H500	61/3.2	26.9	47	30.2	70	12	222	50	40.7	C47	
	02	H400	61/2.9	24.1	47	27.4	70	12	222	50	40.7	C47	
	03	H325	61/2.6	21.7	42	24.7	62	10	212	55	36.4	C42	
	04	H250	61/2.3	19.0	38	21.9	62	10	212	55	32.9	C38	
For CV cable (circular compression type) SE99010000	01	CVCu500	61/3.2	26.9	47	28.0	70	12	222	50	40.7	C47	
	02	CVCu400	61/2.9	24.1	47	25.2	70	12	222	50	40.7	C47	
	03	CVCu325	61/2.6	21.7	42	22.7	62	10	212	55	36.4	C42	
	04	CVCu250	61/2.3	19.0	38	19.9	62	10	212	55	32.9	C38	

NO.	PARTS NAME	Q'TY
1	MAIN BODY	1

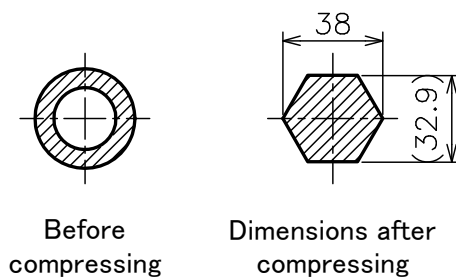
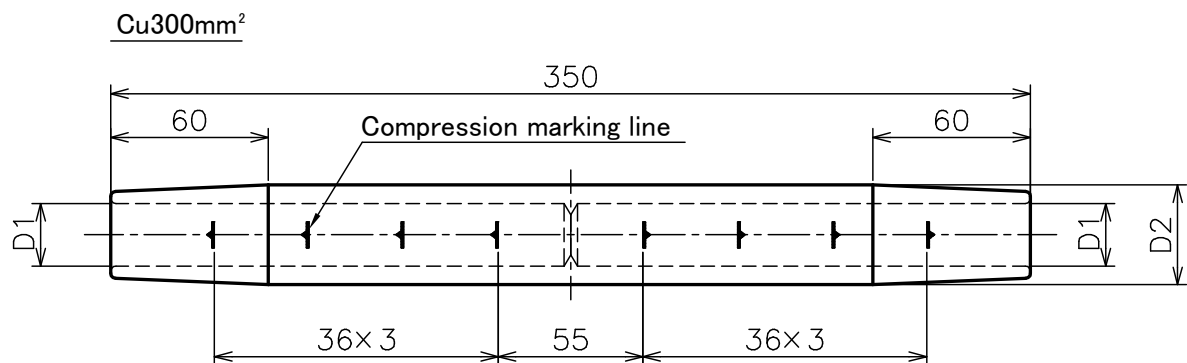
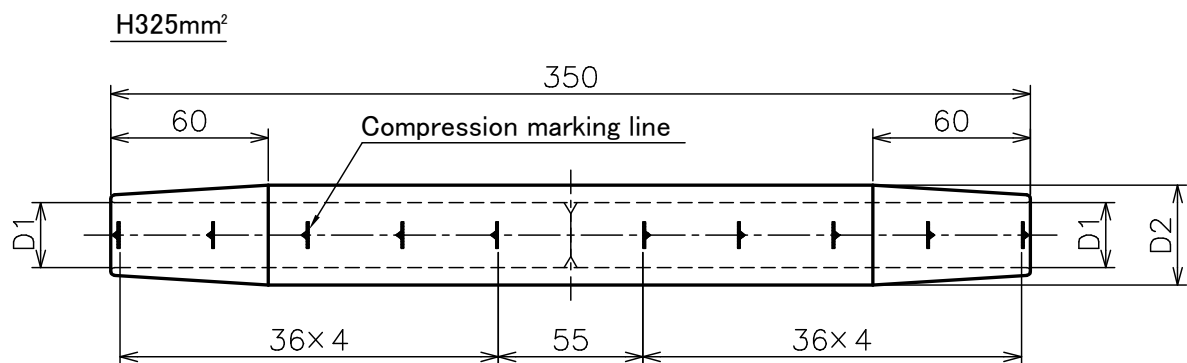
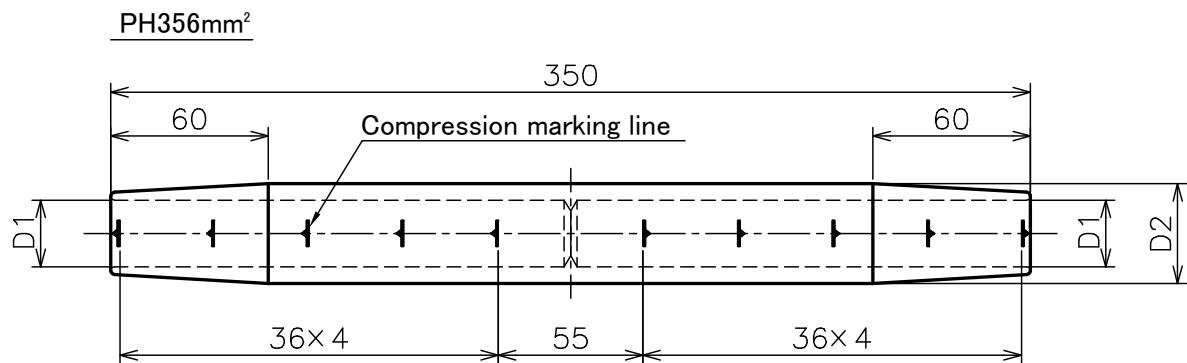
Compression Tension Sleeve for Hard Copper Stranded Wire PH356mm², H325mm², Cu300mm²

直線接続管 硬銅より線

DWG No. SR01310000

PH356mm²、H325mm²、Cu300mm²

(90160502-2)



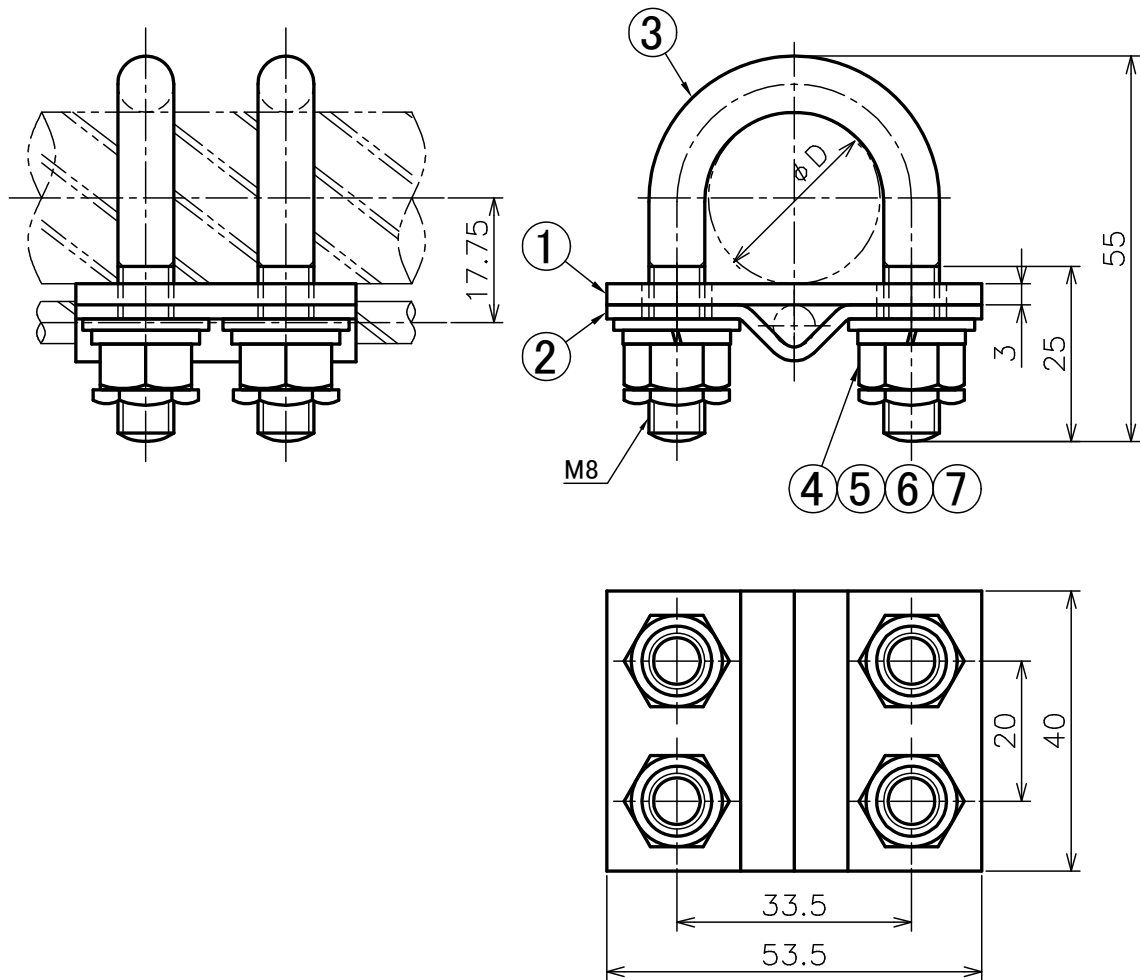
Wire type	(mm)	
	D1	D2
PH356mm ²	φ 25.3	φ 38
H325mm ²	φ 24.7	
Cu300mm ²	φ 23.7	

NO.	PARTS NAME	Q'TY	MATERIAL	REMARKS
1	MAIN BODY	1	C1100	

Connecting Fittings for Arrester Wire PH356mm², H325mm², Cu300mm², for 1 Line, Lead 22mm²

分線金具 PH356mm²・H325mm²・Cu300mm² 1線用
 リード線22mm²

DWG No. SR01360000
 (90141217-1)

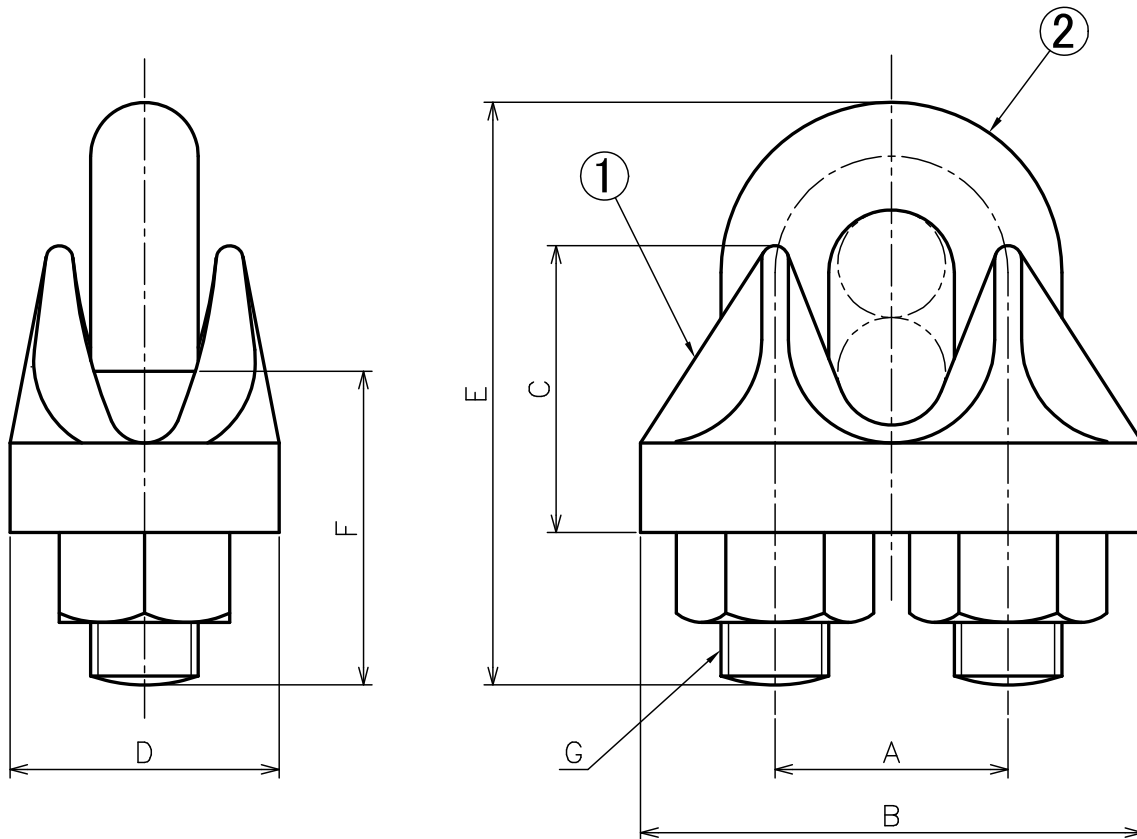


NO.	PARTS NAME	Q'TY
1	MAIN BODY	1
2	HOLD PLATE	1
3	U BOLT M8	2
4	PLAIN WASHER	4
5	SPRING WASHER	4
6	NUT	4
7	THIN LOCK NUT	4

Wire Clip

ワイヤクリップ 各種

DWG No. SW06010000
(241017)



(mm)

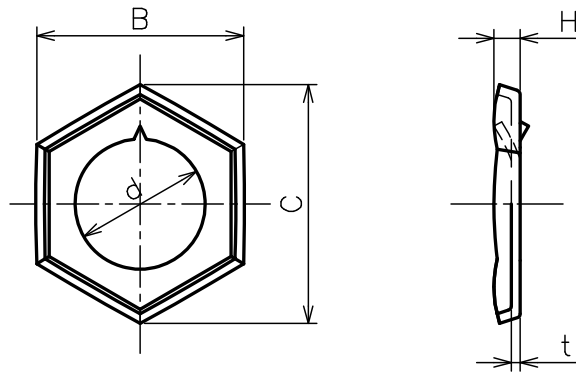
Type	Nominal cross sectional area (mm ²)	Strand configuration (number/mm)	Main body				U bolt					Weight
			A	B	C	D	E		F		G	
							1 line	2 lines	1 line	2 lines		
A	St55	7/3.2	21	49	30	28	—	55	—	30	10	0.20 kg
	St90	7/4.0	26	56	32	30	55	65	30	35	12	0.29 kg
	St135	7/5.0	29	59	35	30	55	70	30	40	12	0.30 kg
B	H38	7/2.6	21	45	23	24	—	50	—	30	10	0.17 kg
	H60	19/2.0	21	49	30	28	—	55	—	30	10	0.20 kg

NO.	PARTS NAME	Q'TY
1	MAIN BODY TYPE A	1
(1)	MAIN BODY TYPE B	(1)
2	U BOLT AND NUT TYPE A	1 ^S
(2)	U BOLT AND NUT TYPE B	(1 ^S)

Thin Lock Nut M14 Small Type

薄板ゆるみ止めナット M14 (小形)

DWG No. 90210518-1



M		d	B	C	H	t
Nut size	Pitch					
M14	1.5	13.2	19	21.9	3.0	0.8

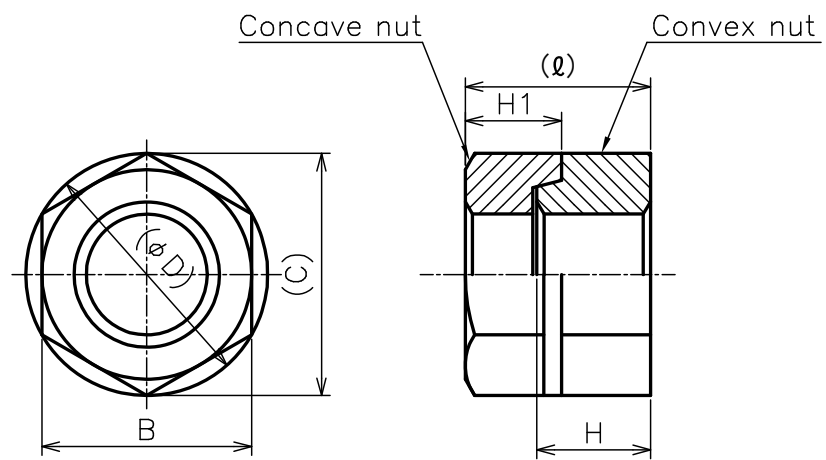
※Apply the specified color to the surface
(Red if not specified)

NO.	PARTS NAME	Q'TY
1	MAIN BODY	1

Hard Lock Nut M12

ハードロックナット M12

DWG No. 90210518-2



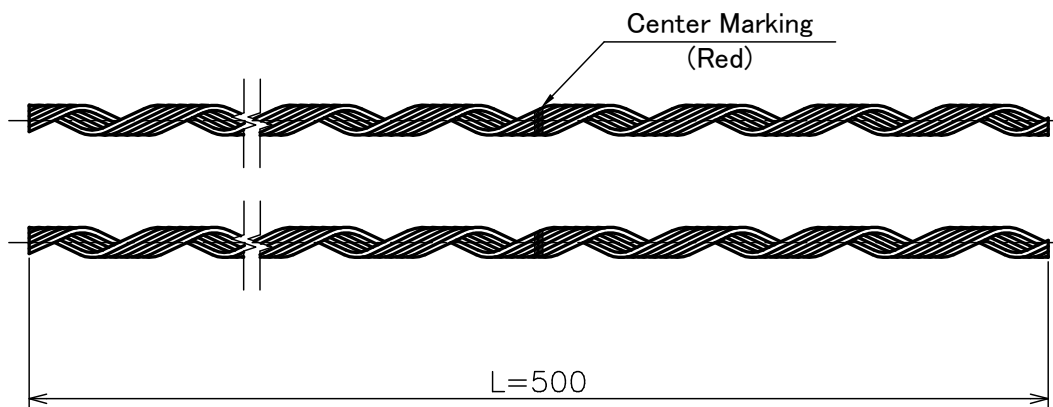
M		H	H1	B	C	ℓ	φD
Nut size	Pitch						
M12	1.75	10	9.3	19	21.9	16.0	21.9

NO.	PARTS NAME	Q'TY
1	MAIN BODY	1 ^S

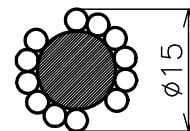
Line Guard St55mm² L=500mm

ラインガード St55mm² L=500mm

DWG No. 93190913-1



Outer diameter after installing

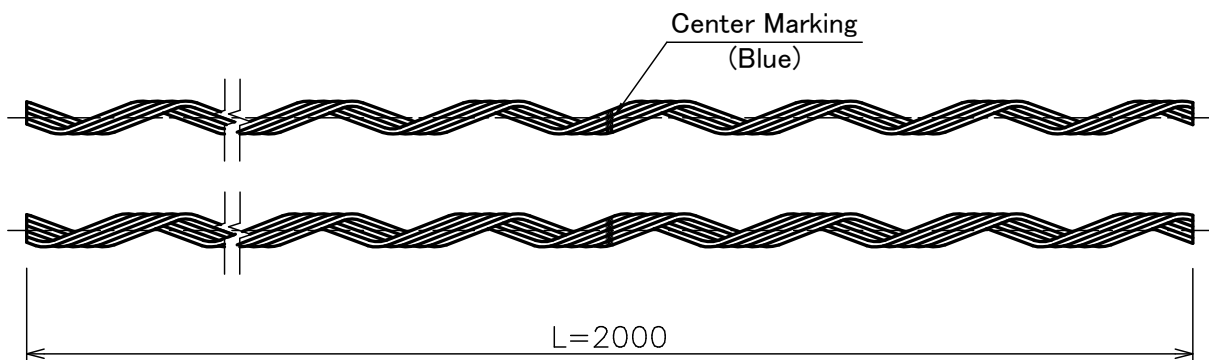


NO.	PARTS NAME	Q'TY
1	Main body	1 ^S

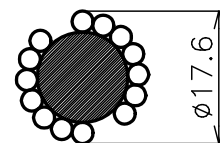
Line Guard for Wire Crossing St90mm² L=2000mm

ラインガード(交差グリップタイプ) St90mm² L=2000mm

DWG No. 90210524-1



Outer diameter after installing



NO.	PARTS NAME	Q'TY
1	Main body	1 ^S