



SUGANUMA
OVERHEAD CATENARY FITTINGS



FOR A BETTER WORLD AND A HAPPIER LIFE

Suganuma Co., Ltd. has been engaged in the work of railway transportation and power supply, which are the most important social infrastructures, for more than 130 years since its establishment in 1893, and has contributed to the improvement of people's lives. Thanks to many customers, we are now able to grow into a company that supports railways not only in Japan but around the world, including Asia.

We have a corporate philosophy of "FOR A BETTER WORLD AND A HAPPIER LIFE" At the same time as we want to contribute to society through our daily work and make efforts to improve the world as much as possible, the lives of all people must be absolutely happy, and our work is the happiness of people. We want you to be connected to.

We always work earnestly and seriously, and pledge to do our utmost to ensure that our attitude is recognized by our customers and the world.



Nobuyuki Suganuma



Company Name Suganuma Co., Ltd.

Business Initiation March 27, 1893

Foundation December 1, 1939

Capital 96,000,000 yen

Representative President and CEO, Nobuyuki Suganuma

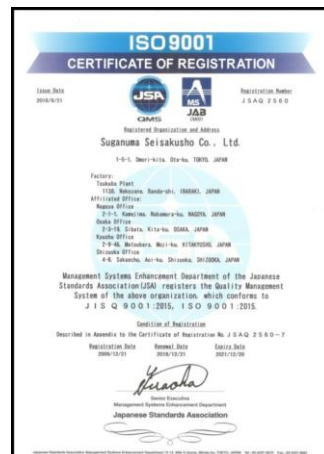
Business Content Design, Manufacture and Sale of Overhead Catenary Fittings.

Office Tokyo Head Office

Shizuoka Office / Nagoya Office / Osaka Office / Kyushu Office

Tsukuba Factory

Certification

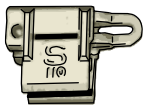


ISO9001 : 2015

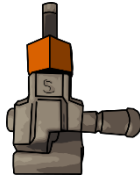


JIS E 2201

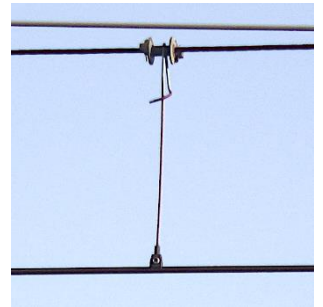
Products



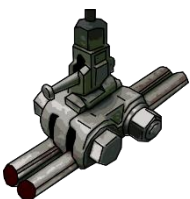
Hanger Ear Type B



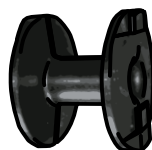
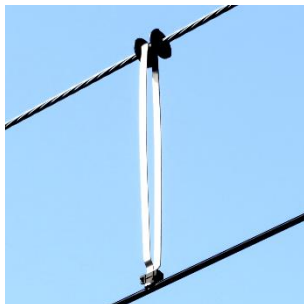
Hanger Ear Type D



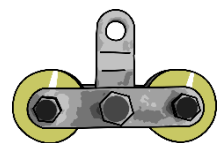
Hanger Ear for Shinkansen



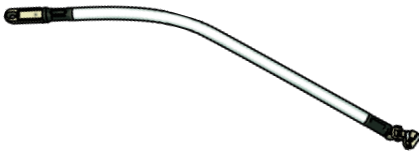
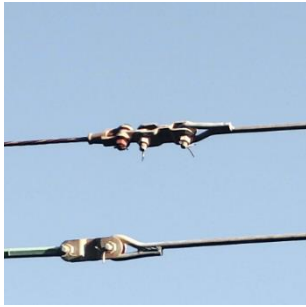
Double Ear



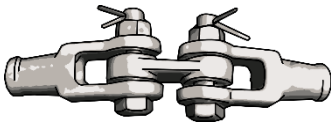
Messenger Wire Protector



Messenger Wire Suspension Pulley



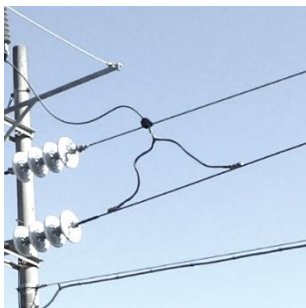
Pull-Off Fitting



Termination Fitting



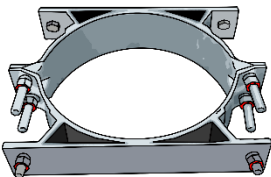
Cable Support Bracket



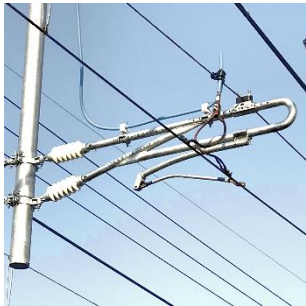
Connector Fitting



Feeding Branch



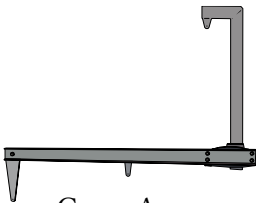
Pole Band



Drop Arm



Cantilever



Cross Arm

Our Main References

Japan

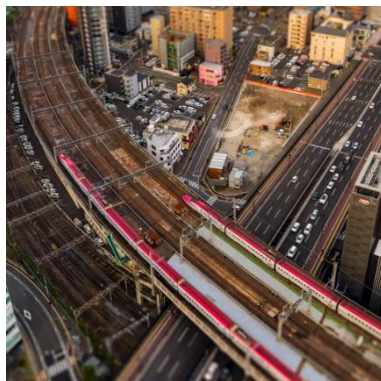


Hokkaido Shinkansen Aomori — Hakodate



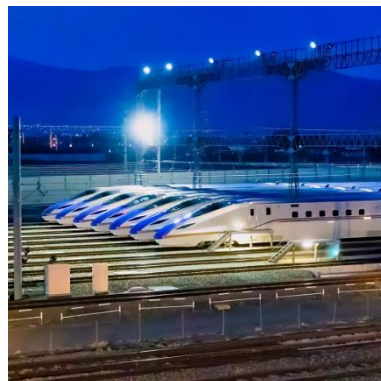
Since 2016
Operating Speed : 260 km/h
Line Length : 148.9 km
Catenary System :
Compound, PHC Simple

Tohoku Shinkansen Tokyo — Aomori



Since 1982
Operating Speed : 320 km/h
Line Length : 674.9 km
Catenary System :
Simple, Heavy Compound,
CS Simple, PHC Simple

Hokuriku Shinkansen Takasaki — Kanazawa



Since 1997
Operating Speed : 269 km/h
Line Length : 345.5 km
Catenary System :
CS Simple, PHC Simple

Tokaido/Sanyo Shinkansen Tokyo — Osaka — Hakata



[**Tokaido**] Since 1964
Operating Speed : 285 km/h
Line Length : 552.6 km
[**Sanyo**] Since 1972
Operating Speed : 300 km/h
Line Length : 664.0 km
Catenary System :
Heavy Compound

Kyushu Shinkansen Hakata — Kagoshima



Since 2004
Operating Speed : 260 km/h
Line Length : 288.9 km
Catenary System :
CS Simple, PHC Simple

Conventional Lines



Since 1895
Max Speed : 160 km/h or less
Total Line Length :
About 22,000 km

Overseas



Indonesia Railway



<Products Offered>

Hanger Ear
Double Ear
Connector Clamp
Steady Arm
Crossing Fitting
Strap
Pole band
Drop Arm
Cross Arm
Cantilever

And So Forth



Taiwan High Speed Rail



<Products Offered>

Hanger Ear
Double Ear
Pull-off Fitting
Steady Arm
Insulated Rod
Feeding Branch
Connector Fitting
Yoke
Pole Band
Drop Arm

And So Forth



Vietnam Railway



<Products Offered>

Hanger Ear
Double Ear
Insulator Fitting
Messenger Wire Protector
M.W Suspension Pulley
Pull-off Fitting
Supporting Fitting
Connector Fitting
Crossing Clamp
Cantilever

And So Forth

Machine & Equipment

Cutting

Band Saw
Flat Steel Cutting
Round Bar Cutting
Shearing



Pressing

400t Press
200t Press
80t Press
Heating Furnace



Welding

Welding Robot
MIG/MAG Welder
Spot Welder
Semi-automatic Welder





Processing

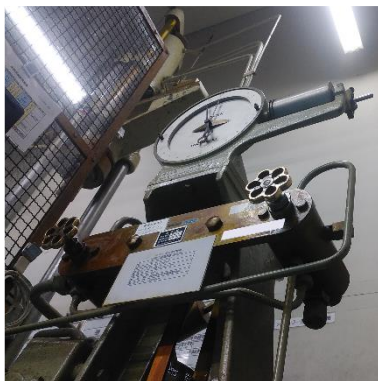
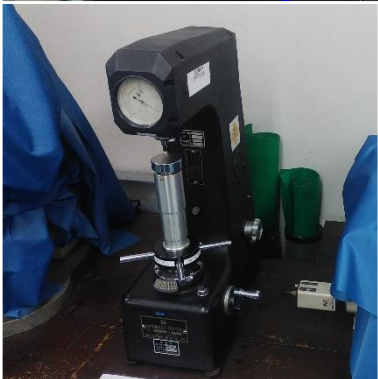
Forming Machine
Machining Center
Bender
Coating Plant

Measuring

Coordinate Measuring Machine
Hardness Tester
Metallurgical Microscope
Projector

Testing

Amsler Testing Machine
Simulated Catenary
Electrical Test Machine
Vibration Test Machine





Our Main Clients

Bureau of Transportation
Tokyo Metropolitan Government

Central Japan Railway Company

Doden Co., Ltd.

East Japan Railway Company

Fujikyuko Co., Ltd.

Fukuoka City Transportation Bureau

Hankyu Hanshin Denki System K.K.

Hitachi, Ltd.

Hokkaido Railway Company

Japan Freight Railway Company

Japan Railway Construction
Transport and Technology Agency

Kajima Corporation

KEPCO

The Kansai Electric Power Co., Inc.

JR Kyushu Electric System Company

Kyushu Railway Company

Maeda Corporation

Ministry of Defense

NESCO

Nippon Densetsu Kogyo Co., Ltd.

Nippon Rietec Co., Ltd.

Nishimatsu Construction Co., Ltd.

Nishi-Nihon Tech Co., Ltd.

Obayashi Corporation

Odakyu Electric Railway Co., Ltd.

Osaka Municipal Transportation Bureau

Shikoku Railway Company

Shimizu Corporation

Shinsei Technos Co., Ltd.

Taisei Corporation

TEPCO

Tobu Railway Co., Ltd.

Toho Electrical Construction Company

Tokyo Metro Co., Ltd.

Tokyu Corporation

Total Electric Management Service Co., Ltd.

Transportation Bureau, City of Nagoya

Wako Filter Technology Ltd.

Wako Techno Ltd.

West Japan Railway Company

And So Forth



History

- 1893 Suganuma was founded as an independently-operated business in Tokyo
Conducted press casting, welding, sales and manufacturing of products.
- 1916 Received orders for electric train line hardware and communication equipment
from The Ministry of Communications and Transportation.
- 1918 Received orders for electric train line hardware from the Ministry of Railways.
- 1939 Made an organization change as a stock company with capital of 188,000 yen.
- 1952 Obtained the JIS 1690 certification for electric train line hardware from
the Ministry of International Trade and Industry.
- 1953 Obtained the JIS 1690-1 for an additional item from the Ministry of
International Trade and Industry.
- 1959 Relocated the head office and the Mita Factory to Omorinishi, Ota Ward, Tokyo.
- 1965 Opened the Osaka Office.
- 1969 Opened the Nagoya Office.
- 1974 Opened the Kyushu Office.
- 1982 Capital increased to 96,000,000 yen.
- 1993 Relocated the Omori Factory to Bando City, Ibaraki (previous Iwai City).
- 1993 Relocated the head office to 3-4-4, Omorikita, Tokyo.
- 1998 Obtained the JIS mark display certification (JIS E2201).
Certification number: 398010.
- 2008 Obtained the new JIS mark display system certification (JIS E2201).
Certification number: JQ0308017.
- 2009 Obtained ISO9001 certification (JSAQ2560).
- 2013 Relocated the head office to 1-5-1, Omorikita, Tokyo.
- 2015 Opened the Shizuoka Office.
- 2015 Relocated the Kyushu Office to Matsubara, Moji-ku, KitaKyushu City, Fukuoka.

SUGANUMA CO., LTD.

1-5-1, Omorikita, Ota-ku, Tokyo, Japan

TEL +81-3-3762-2771

URL <http://www.suganuma-ss.co.jp>

E-mail contact@suganuma-ss.co.jp



Product Catalog